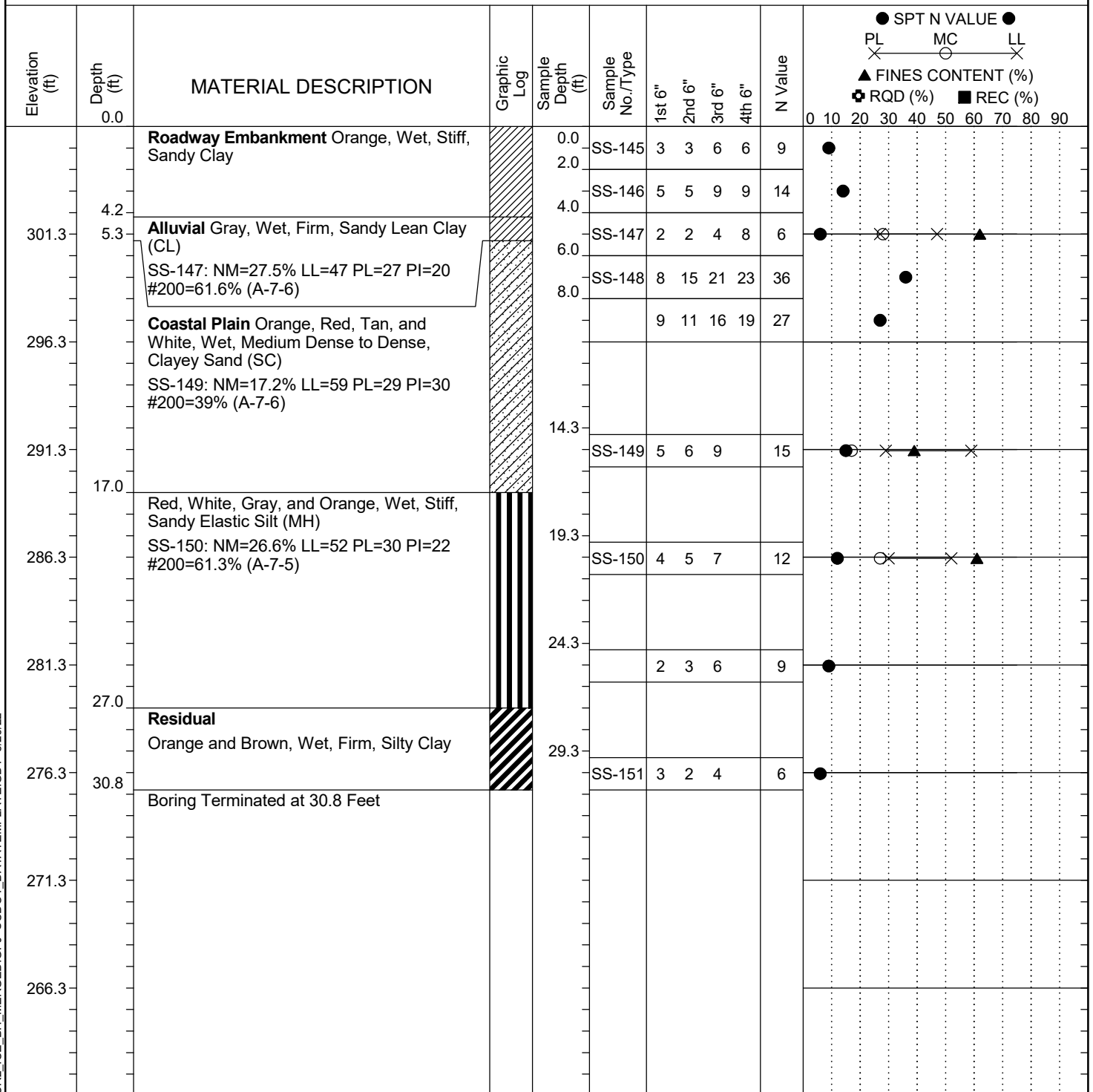


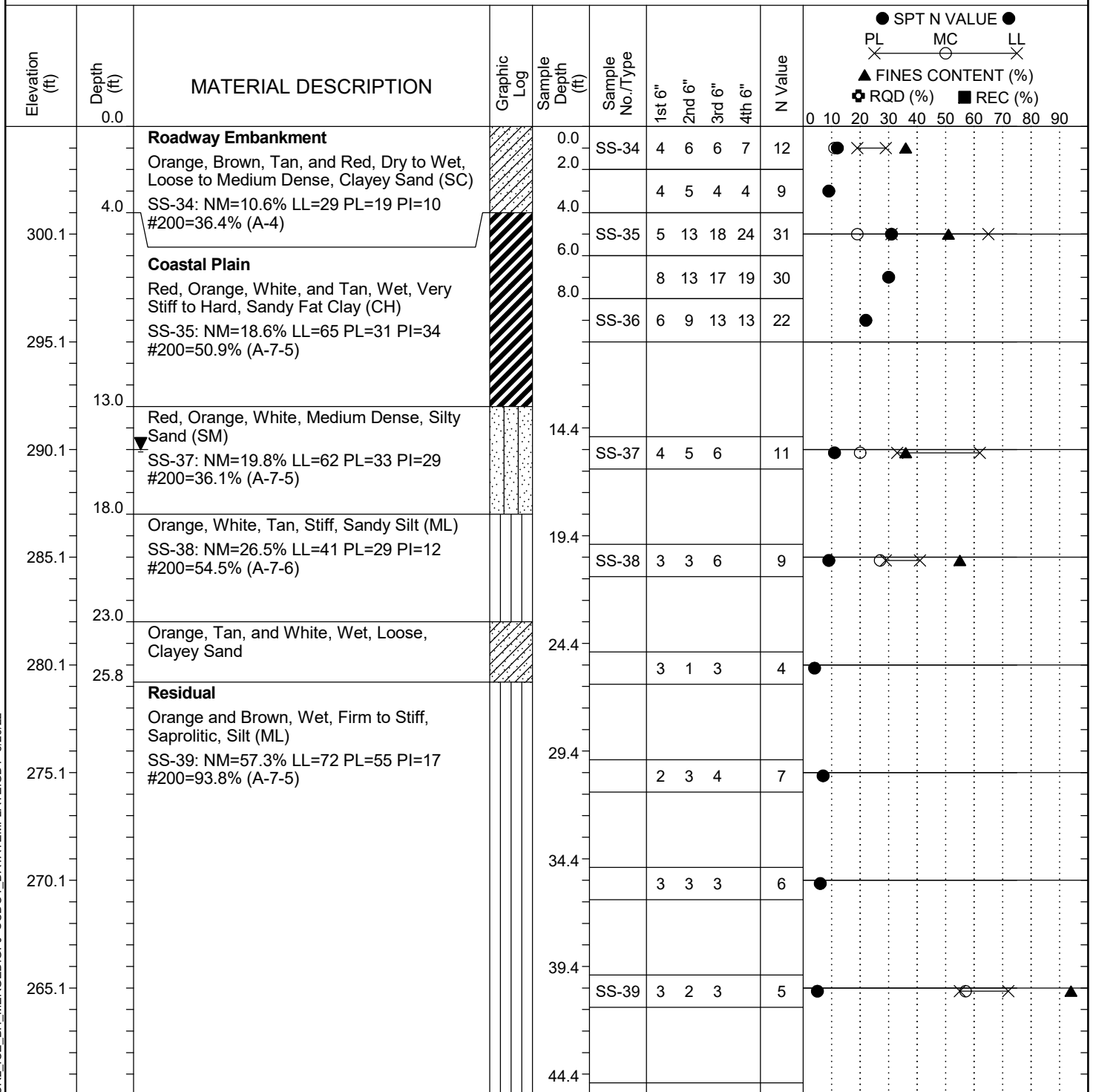
Project ID: P039719				County: Richland		Boring No.: G-015		
Site Description:		Carolina Crossroads Phase 2					Route: I-20	
Eng./Geo.: C. McIlroy		Boring Location: 394+85		Offset: 44 LT		Alignment: I20CL		
Elev.: 306.3 ft		Latitude: 34.03913363		Longitude: -81.0963254		Date Started: 3/17/2022		
Total Depth: 30.8 ft		Soil Depth: 30.8 ft		Core Depth: N/A ft		Date Completed: 3/17/2022		
Bore Hole Diameter (in): 2.25		Sampler Configuration		Liner Required: Y (N)		Liner Used: Y (N)		
Drill Machine: D-50 #435		Drill Method: RW		Hammer Type: Automatic		Energy Ratio: 84.4%		
Core Size: N/A		Driller: M. Morgan		Groundwater: TOB N/A		24HR: N/A		



LEGEND

SAMPLER TYPE		DRILLING METHOD	
SS - Split Spoon	NQ - Rock Core, 1-7/8"	HSA - Hollow Stem Auger	RW - Rotary Wash
UD - Undisturbed Sample	CU - Cuttings	CFA - Continuous Flight Augers	RC - Rock Core
AWG - Rock Core, 1-1/8"	CT - Continuous Tube	DC - Driving Casing	

Project ID: P039719				County: Richland		Boring No.: G-106		
Site Description:		Carolina Crossroads Phase 2					Route:	Ramp
Eng./Geo.: C. McIlroy		Boring Location: 394+91			Offset: 56 LT	Alignment:		RAMPF
Elev.: 305.1 ft	Latitude: 34.03923042	Longitude: -81.09636541		Date Started:		4/28/2022		
Total Depth: 69.9 ft	Soil Depth: 69.9 ft	Core Depth: N/A ft		Date Completed:		4/28/2022		
Bore Hole Diameter (in): 2.25		Sampler Configuration			Liner Required: Y (N)	Liner Used: Y (N)		
Drill Machine: D-50 #439	Drill Method: RW		Hammer Type: Automatic		Energy Ratio: 90.8%			
Core Size: N/A	Driller: R. Cassell		Groundwater: TOB	N/A		24HR	15 ft	

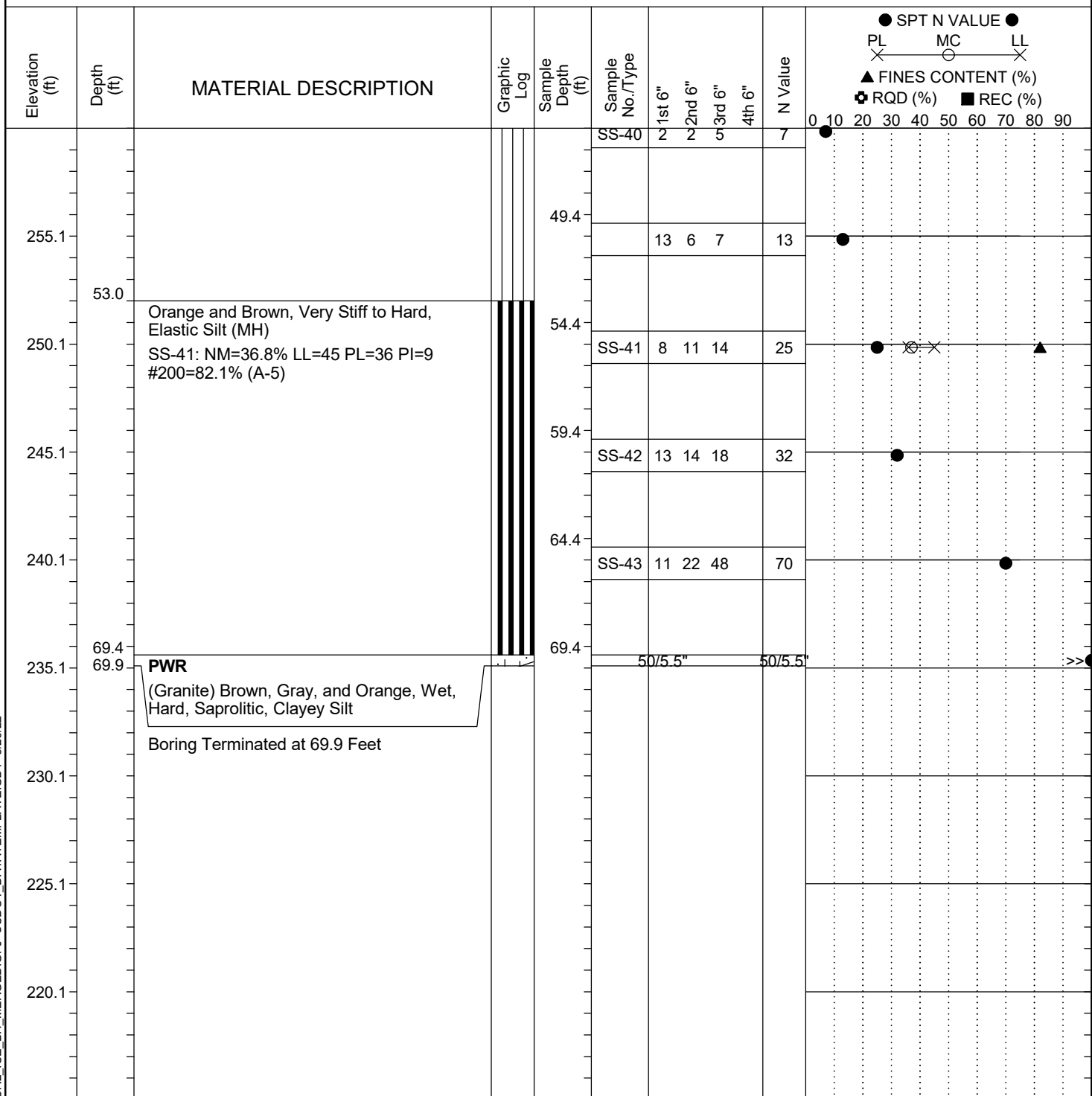


LEGEND

Continued Next Page

SAMPLER TYPE			DRILLING METHOD	
SS - Split Spoon	NQ - Rock Core, 1-7/8"		HSA - Hollow Stem Auger	RW - Rotary Wash
UD - Undisturbed Sample	CU - Cuttings		CFA - Continuous Flight Augers	RC - Rock Core
AWG - Rock Core, 1-1/8"	CT - Continuous Tube		DC - Driving Casing	

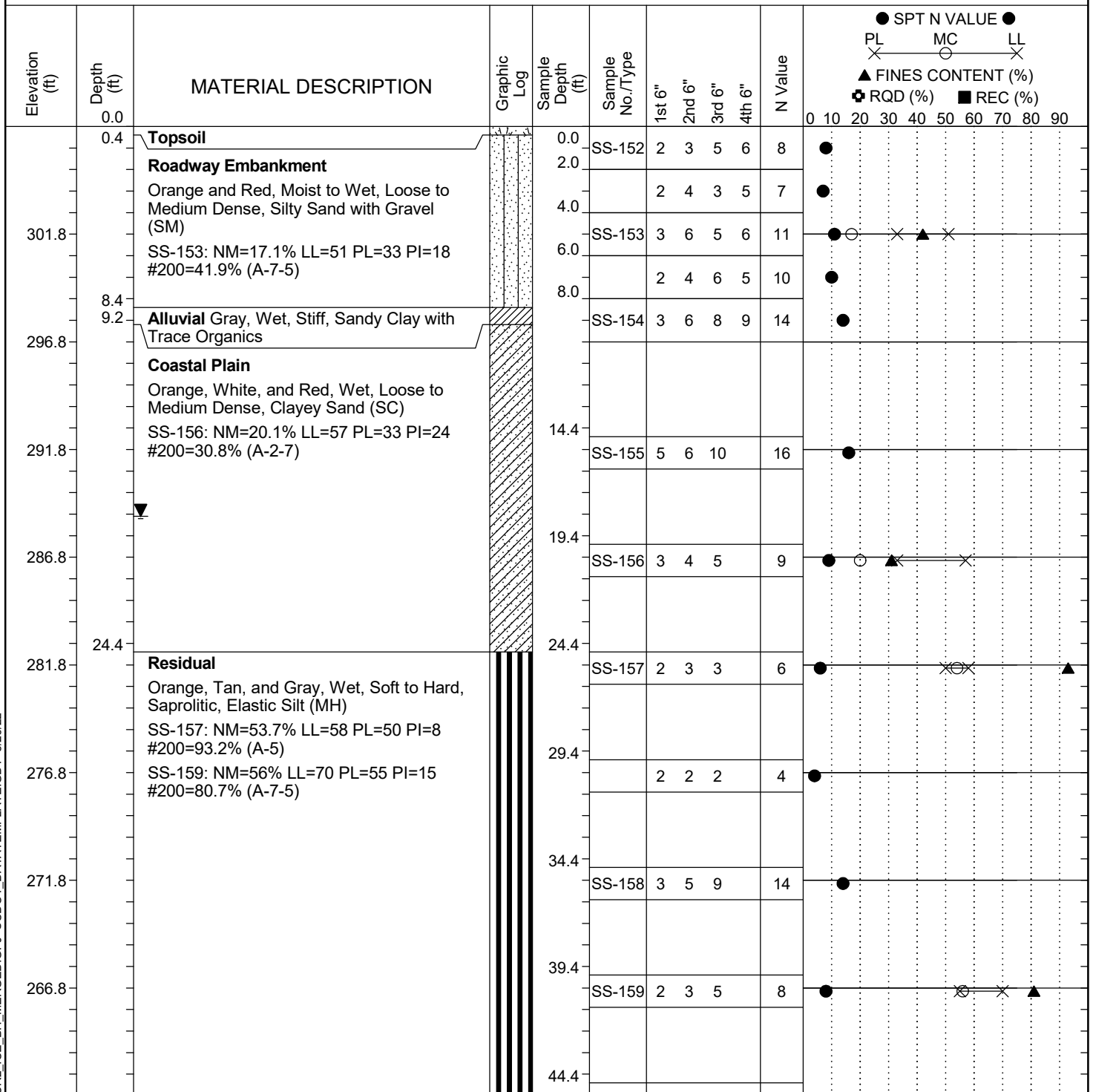
Project ID:	P039719	County:	Richland	Boring No.:	G-106
Site Description:	Carolina Crossroads Phase 2			Route:	Ramp
Eng./Geo.:	C. McIlroy	Boring Location:	394+91	Offset:	56 LT
Elev.:	305.1 ft	Latitude:	34.03923042	Longitude:	-81.09636541
Date Started:	4/28/2022				
Total Depth:	69.9 ft	Soil Depth:	69.9 ft	Core Depth:	N/A ft
Date Completed:	4/28/2022				
Bore Hole Diameter (in):	2.25	Sampler Configuration		Liner Required:	Y (N)
Liner Used:	Y (N)				
Drill Machine:	D-50 #439	Drill Method:	RW	Hammer Type:	Automatic
Energy Ratio:	90.8%				
Core Size:	N/A	Driller:	R. Cassell	Groundwater:	TOB N/A
24HR	15 ft				



LEGEND

SAMPLER TYPE		DRILLING METHOD	
SS - Split Spoon	NQ - Rock Core, 1-7/8"	HSA - Hollow Stem Auger	RW - Rotary Wash
UD - Undisturbed Sample	CU - Cuttings	CFA - Continuous Flight Augers	RC - Rock Core
AWG - Rock Core, 1-1/8"	CT - Continuous Tube	DC - Driving Casing	

Project ID:	P039719	County:	Richland	Boring No.:	G-107
Site Description:	Carolina Crossroads Phase 2			Route:	Ramp
Eng./Geo.:	C. McIlroy	Boring Location:	395+42	Offset:	41 LT
Elev.:	306.8 ft	Latitude:	34.03920845	Longitude:	-81.09618629
Total Depth:	89.4 ft	Soil Depth:	89.4 ft	Date Started:	3/17/2022
Core Depth:	N/A ft	Date Completed:	3/17/2022	Alignment:	RAMPF
Bore Hole Diameter (in):	2.25	Sampler Configuration		Liner Required:	Y (N)
Drill Machine:	D-50 #435	Drill Method:	RW	Energy Ratio:	84.4%
Core Size:	N/A	Driller:	M. Morgan	Groundwater:	TOB N/A
				24HR	18.1 ft

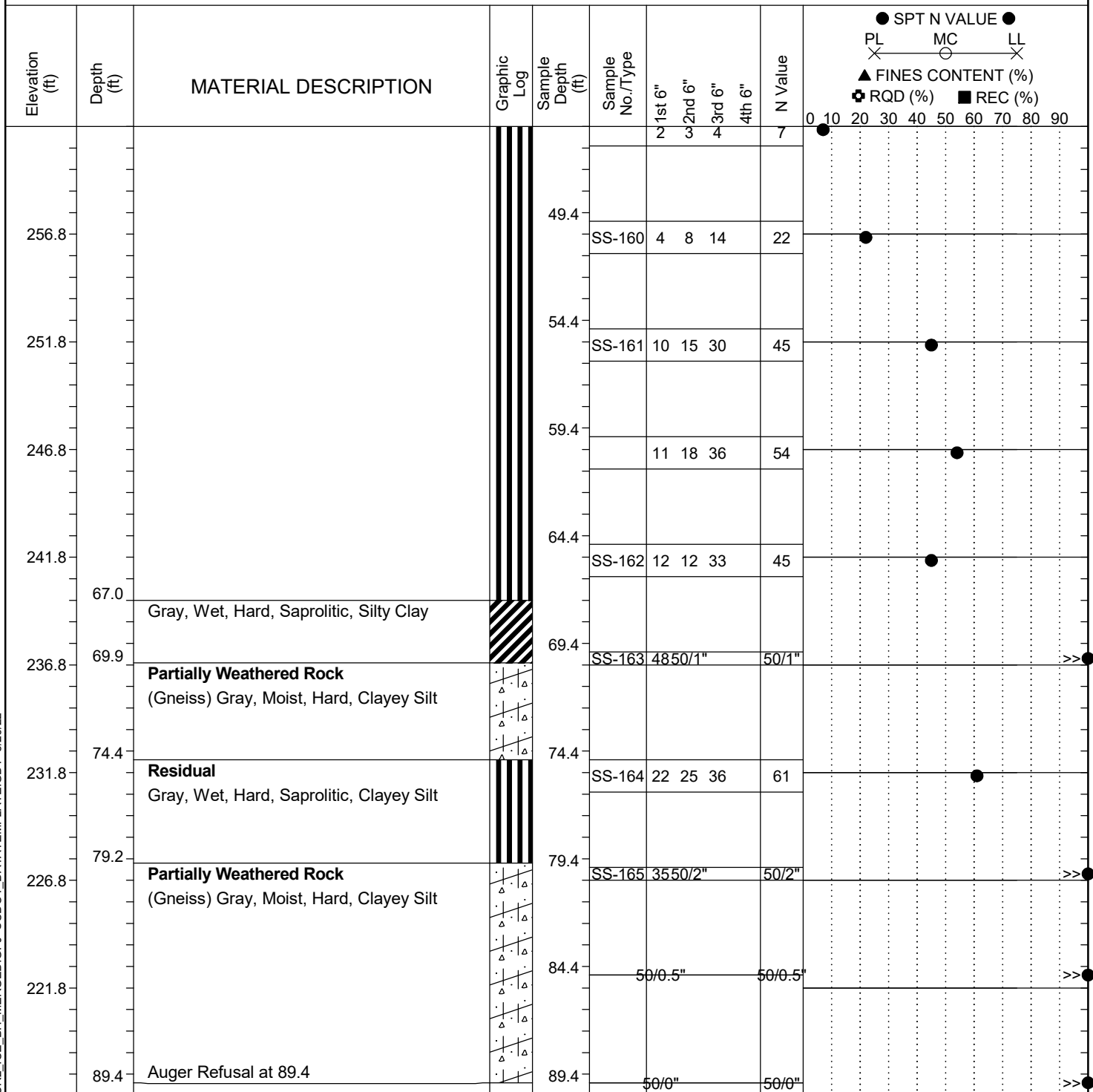


LEGEND

Continued Next Page

SAMPLER TYPE		DRILLING METHOD	
SS - Split Spoon	NQ - Rock Core, 1-7/8"	HSA - Hollow Stem Auger	RW - Rotary Wash
UD - Undisturbed Sample	CU - Cuttings	CFA - Continuous Flight Augers	RC - Rock Core
AWG - Rock Core, 1-1/8"	CT - Continuous Tube	DC - Driving Casing	

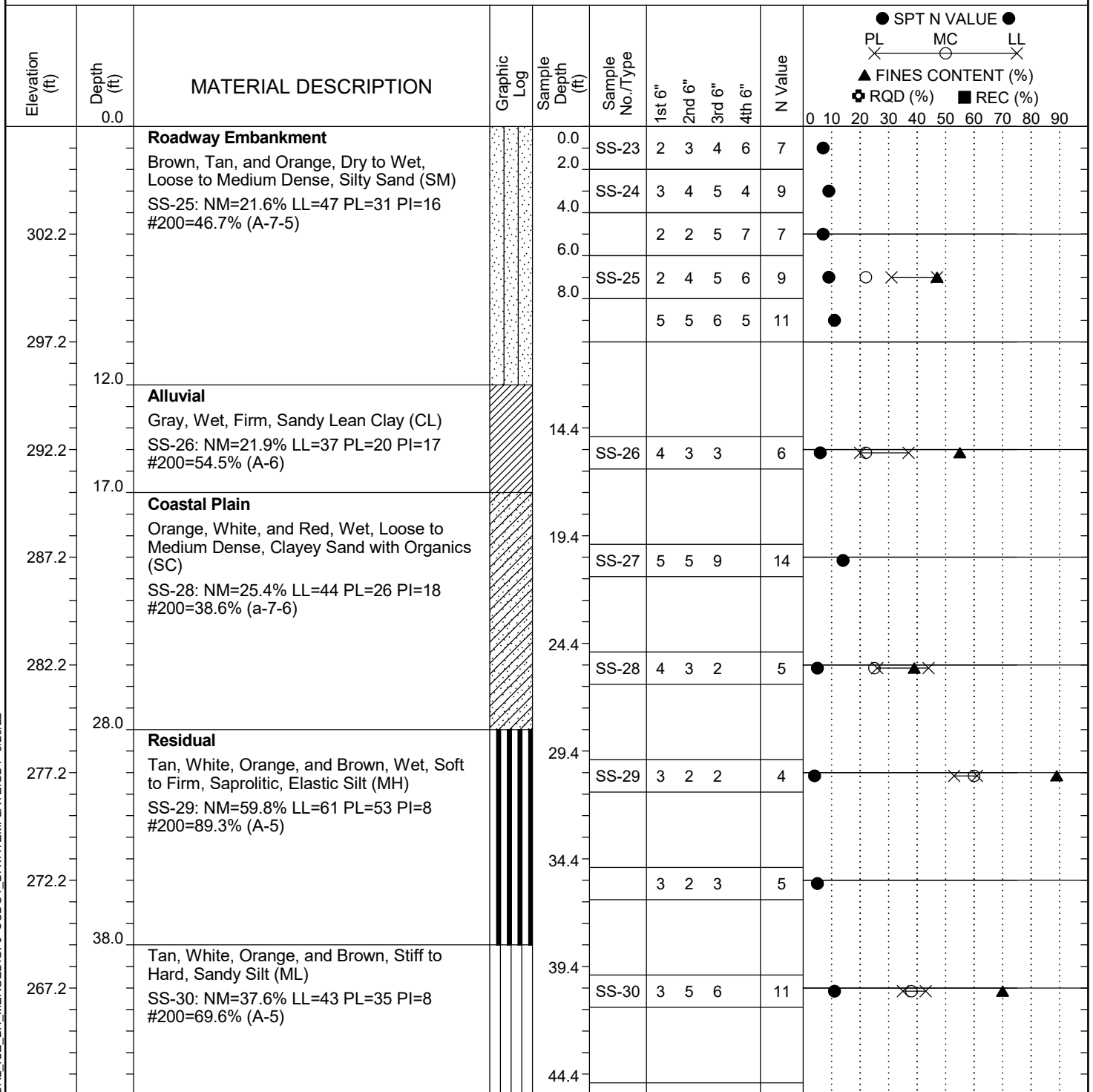
Project ID:	P039719	County:	Richland	Boring No.:	G-107
Site Description:	Carolina Crossroads Phase 2			Route:	Ramp
Eng./Geo.:	C. McIlroy	Boring Location:	395+42	Offset:	41 LT
Elev.:	306.8 ft	Latitude:	34.03920845	Longitude:	-81.09618629
Total Depth:	89.4 ft	Soil Depth:	89.4 ft	Core Depth:	N/A ft
Date Started:	3/17/2022				
Date Completed:	3/17/2022				
Bore Hole Diameter (in):	2.25	Sampler Configuration		Liner Required:	Y (N)
Liner Used:	Y (N)				
Drill Machine:	D-50 #435	Drill Method:	RW	Hammer Type:	Automatic
Energy Ratio:	84.4%				
Core Size:	N/A	Driller:	M. Morgan	Groundwater:	TOB N/A
24HR	18.1 ft				



LEGEND

SAMPLER TYPE		DRILLING METHOD	
SS - Split Spoon	NQ - Rock Core, 1-7/8"	HSA - Hollow Stem Auger	RW - Rotary Wash
UD - Undisturbed Sample	CU - Cuttings	CFA - Continuous Flight Augers	RC - Rock Core
AWG - Rock Core, 1-1/8"	CT - Continuous Tube	DC - Driving Casing	

Project ID:	P039719	County:	Richland	Boring No.:	G-108
Site Description:	Carolina Crossroads Phase 2			Route:	Ramp
Eng./Geo.:	C. McIlroy	Boring Location:	395+85	Offset:	36 LT
Elev.:	307.2 ft	Latitude:	34.03923212	Longitude:	-81.09603626
Total Depth:	70.2 ft	Soil Depth:	70.2 ft	Date Started:	4/28/2022
Core Depth:	N/A ft	Date Completed:	4/28/2022	Alignment:	RAMPF
Bore Hole Diameter (in):	2.25	Sampler Configuration		Liner Required:	Y (N)
Drill Machine:	D-50 #439	Drill Method:	RW	Energy Ratio:	90.8%
Core Size:	N/A	Driller:	R. Cassell	Groundwater:	TOB N/A
				24HR	19.1 ft

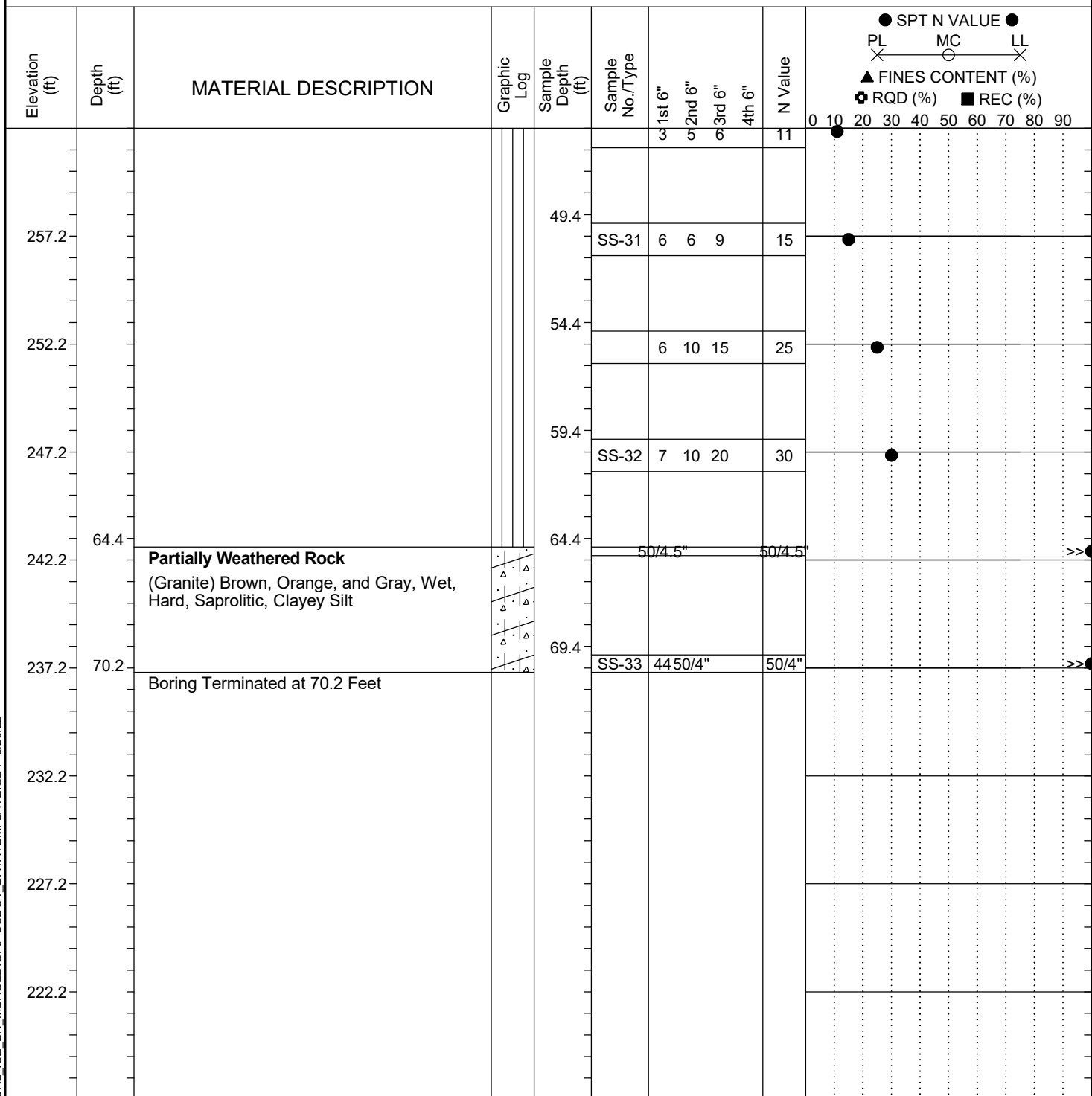


LEGEND

Continued Next Page

SAMPLER TYPE		DRILLING METHOD	
SS - Split Spoon	NQ - Rock Core, 1-7/8"	HSA - Hollow Stem Auger	RW - Rotary Wash
UD - Undisturbed Sample	CU - Cuttings	CFA - Continuous Flight Augers	RC - Rock Core
AWG - Rock Core, 1-1/8"	CT - Continuous Tube	DC - Driving Casing	

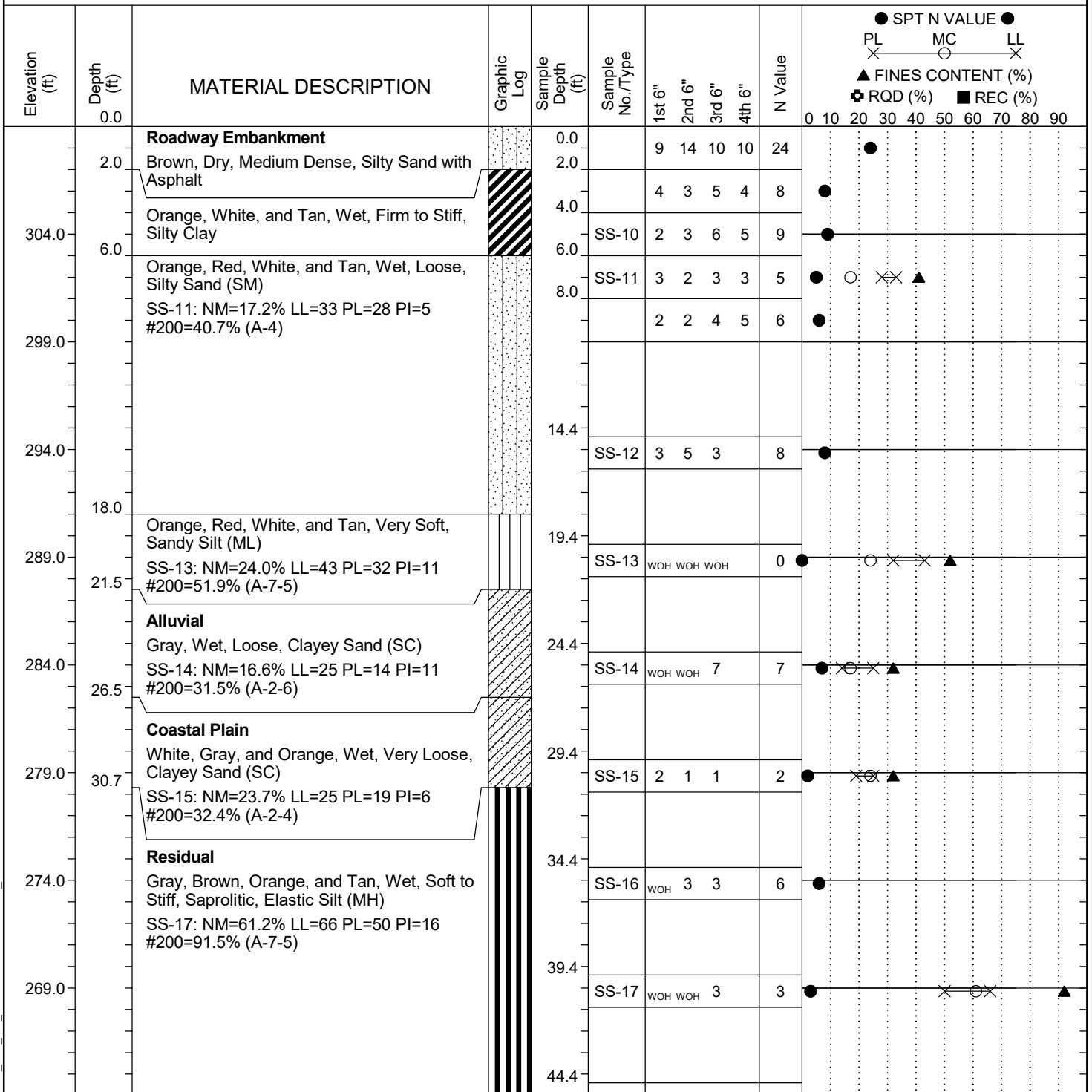
Project ID:	P039719	County:	Richland	Boring No.:	G-108
Site Description:	Carolina Crossroads Phase 2			Route:	Ramp
Eng./Geo.:	C. McIlroy	Boring Location:	395+85	Offset:	36 LT
Elev.:	307.2 ft	Latitude:	34.03923212	Longitude:	-81.09603626
Date Started:	4/28/2022				
Total Depth:	70.2 ft	Soil Depth:	70.2 ft	Core Depth:	N/A ft
Date Completed:	4/28/2022				
Bore Hole Diameter (in):	2.25	Sampler Configuration	Liner Required: Y (N)		Liner Used: Y (N)
Drill Machine:	D-50 #439	Drill Method:	RW	Hammer Type:	Automatic
Energy Ratio:	90.8%				
Core Size:	N/A	Driller:	R. Cassell	Groundwater:	TOB N/A
24HR	19.1 ft				



LEGEND

SAMPLER TYPE		DRILLING METHOD	
SS - Split Spoon	NQ - Rock Core, 1-7/8"	HSA - Hollow Stem Auger	RW - Rotary Wash
UD - Undisturbed Sample	CU - Cuttings	CFA - Continuous Flight Augers	RC - Rock Core
AWG - Rock Core, 1-1/8"	CT - Continuous Tube	DC - Driving Casing	

Project ID:	P039719	County:	Richland	Boring No.:	G-109
Site Description:	Carolina Crossroads Phase 2			Route:	Ramp
Eng./Geo.:	C. McIlroy	Boring Location:	395+91	Offset:	20 RT
Elev.:	309.0 ft	Latitude:	34.03917627	Longitude:	-81.09593509
Total Depth:	84.6 ft	Soil Depth:	84.6 ft	Date Started:	4/27/2022
Core Depth:	N/A ft	Date Completed:	4/27/2022	Alignment:	RAMPF
Bore Hole Diameter (in):	2.25	Sampler Configuration		Liner Required:	Y (N)
Drill Machine:	D-50 #439	Drill Method:	RW	Energy Ratio:	90.8%
Core Size:	N/A	Driller:	R. Cassell	Groundwater:	TOB N/A
				24HR	Cave @ 8'



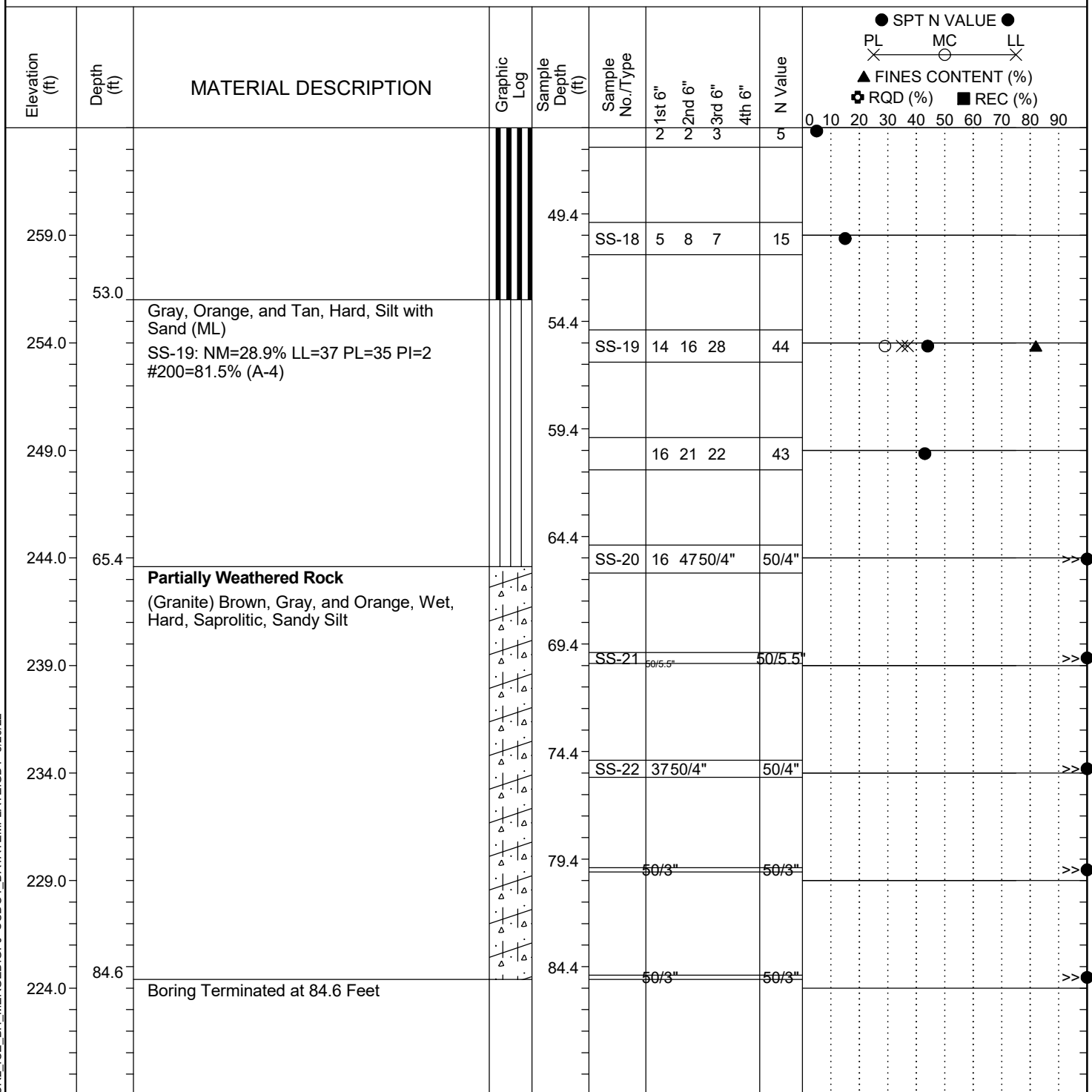
LEGEND

Continued Next Page

SC_DOT 20-01_CCR2_ICE_BH_MERGED.GPJ SCDOT_DATATEMPLATE.GDT 5/26/22

SAMPLER TYPE		DRILLING METHOD	
SS - Split Spoon	NQ - Rock Core, 1-7/8"	HSA - Hollow Stem Auger	RW - Rotary Wash
UD - Undisturbed Sample	CU - Cuttings	CFA - Continuous Flight Augers	RC - Rock Core
AWG - Rock Core, 1-1/8"	CT - Continuous Tube	DC - Driving Casing	

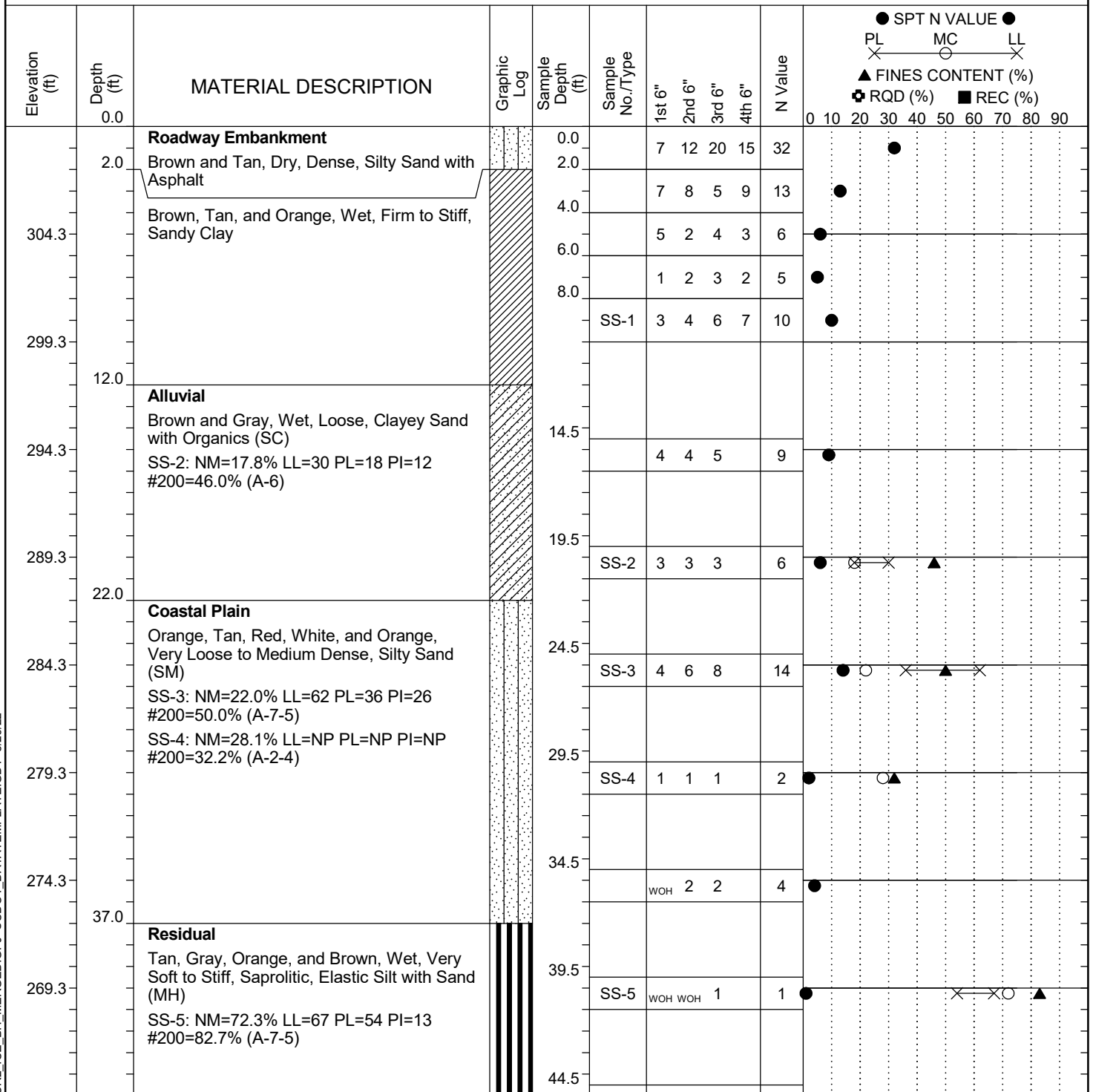
Project ID:	P039719	County:	Richland	Boring No.:	G-109
Site Description:	Carolina Crossroads Phase 2			Route:	Ramp
Eng./Geo.:	C. McIlroy	Boring Location:	395+91	Offset:	20 RT
Elev.:	309.0 ft	Latitude:	34.03917627	Longitude:	-81.09593509
Total Depth:	84.6 ft	Soil Depth:	84.6 ft	Date Started:	4/27/2022
Core Depth:	N/A ft	Date Completed:	4/27/2022	Alignment:	RAMPF
Bore Hole Diameter (in):	2.25	Sampler Configuration		Liner Required:	Y (N)
Drill Machine:	D-50 #439	Drill Method:	RW	Liner Used:	Y (N)
Core Size:	N/A	Hammer Type:	Automatic	Energy Ratio:	90.8%
Driller:	R. Cassell	Groundwater:	TOB	24HR	Cave @ 8'



LEGEND

SAMPLER TYPE		DRILLING METHOD	
SS - Split Spoon	NQ - Rock Core, 1-7/8"	HSA - Hollow Stem Auger	RW - Rotary Wash
UD - Undisturbed Sample	CU - Cuttings	CFA - Continuous Flight Augers	RC - Rock Core
AWG - Rock Core, 1-1/8"	CT - Continuous Tube	DC - Driving Casing	

Project ID: P039719				County: Richland		Boring No.: G-110		
Site Description:		Carolina Crossroads Phase 2					Route: Ramp	
Eng./Geo.: C. McIlroy		Boring Location: 396+46			Offset: 28 RT		Alignment: RAMPF	
Elev.: 309.3 ft		Latitude: 34.03921449		Longitude: -81.09577882		Date Started: 4/26/2022		
Total Depth: 69.6 ft		Soil Depth: 69.6 ft		Core Depth: N/A ft		Date Completed: 4/26/2022		
Bore Hole Diameter (in): 2.25		Sampler Configuration			Liner Required: Y (N)		Liner Used: Y (N)	
Drill Machine: D-50 #439		Drill Method: RW		Hammer Type: Automatic		Energy Ratio: 90.8%		
Core Size: N/A		Driller: R. Cassell		Groundwater: TOB N/A		24HR 23.5 ft		

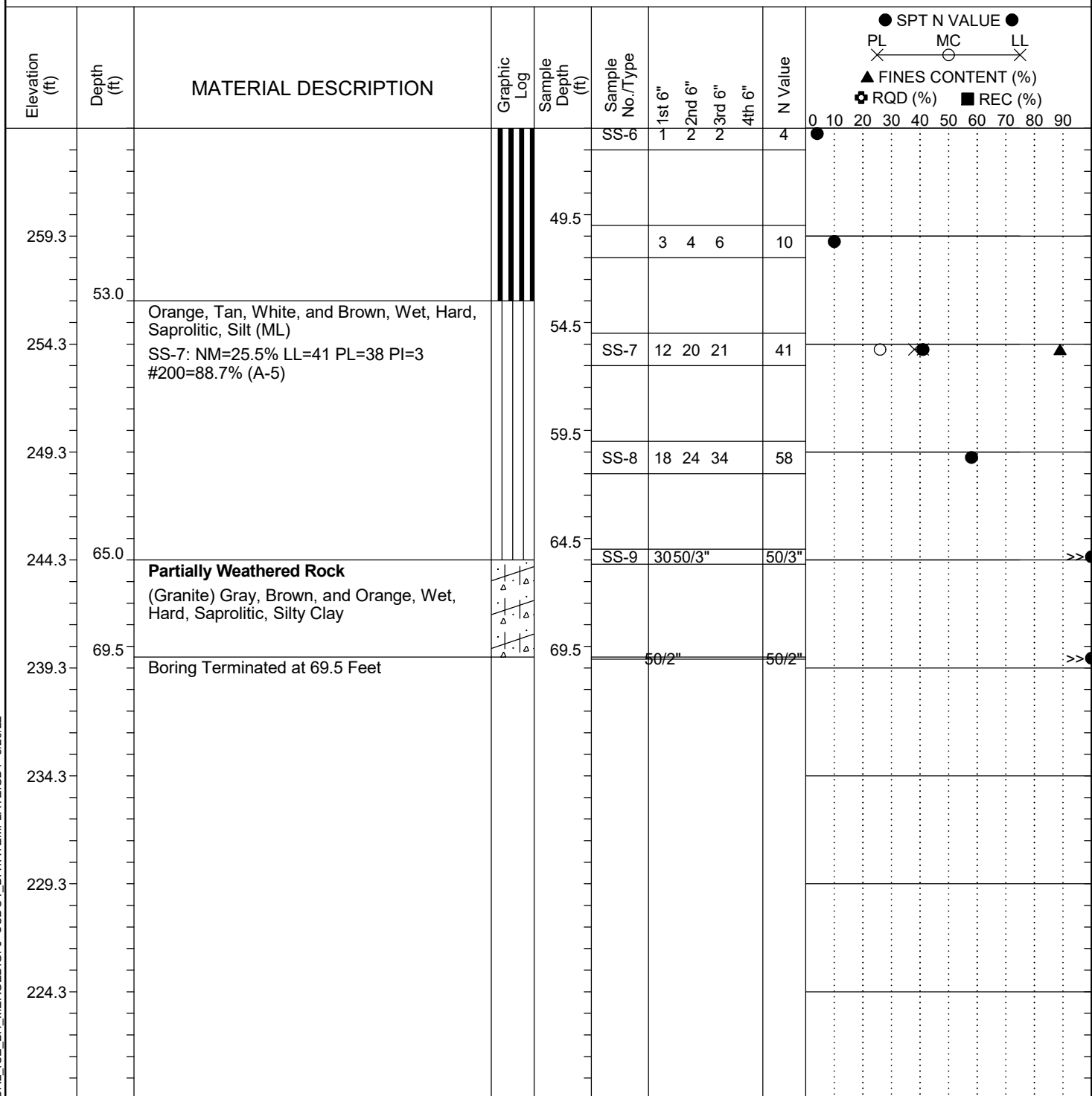


LEGEND

Continued Next Page

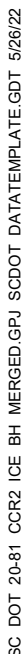
SAMPLER TYPE		DRILLING METHOD	
SS - Split Spoon	NQ - Rock Core, 1-7/8"	HSA - Hollow Stem Auger	RW - Rotary Wash
UD - Undisturbed Sample	CU - Cuttings	CFA - Continuous Flight Augers	RC - Rock Core
AWG - Rock Core, 1-1/8"	CT - Continuous Tube	DC - Driving Casing	

Project ID:	P039719	County:	Richland	Boring No.:	G-110
Site Description:	Carolina Crossroads Phase 2			Route:	Ramp
Eng./Geo.:	C. McIlroy	Boring Location:	396+46	Offset:	28 RT
Elev.:	309.3 ft	Latitude:	34.03921449	Longitude:	-81.09577882
Total Depth:	69.6 ft	Soil Depth:	69.6 ft	Core Depth:	N/A ft
Date Started:	4/26/2022				
Date Completed:	4/26/2022				
Bore Hole Diameter (in):	2.25	Sampler Configuration	Liner Required: Y (N)		Liner Used: Y (N)
Drill Machine:	D-50 #439	Drill Method:	RW	Hammer Type:	Automatic
Energy Ratio:	90.8%				
Core Size:	N/A	Driller:	R. Cassell	Groundwater:	TOB N/A
24HR	23.5 ft				



LEGEND

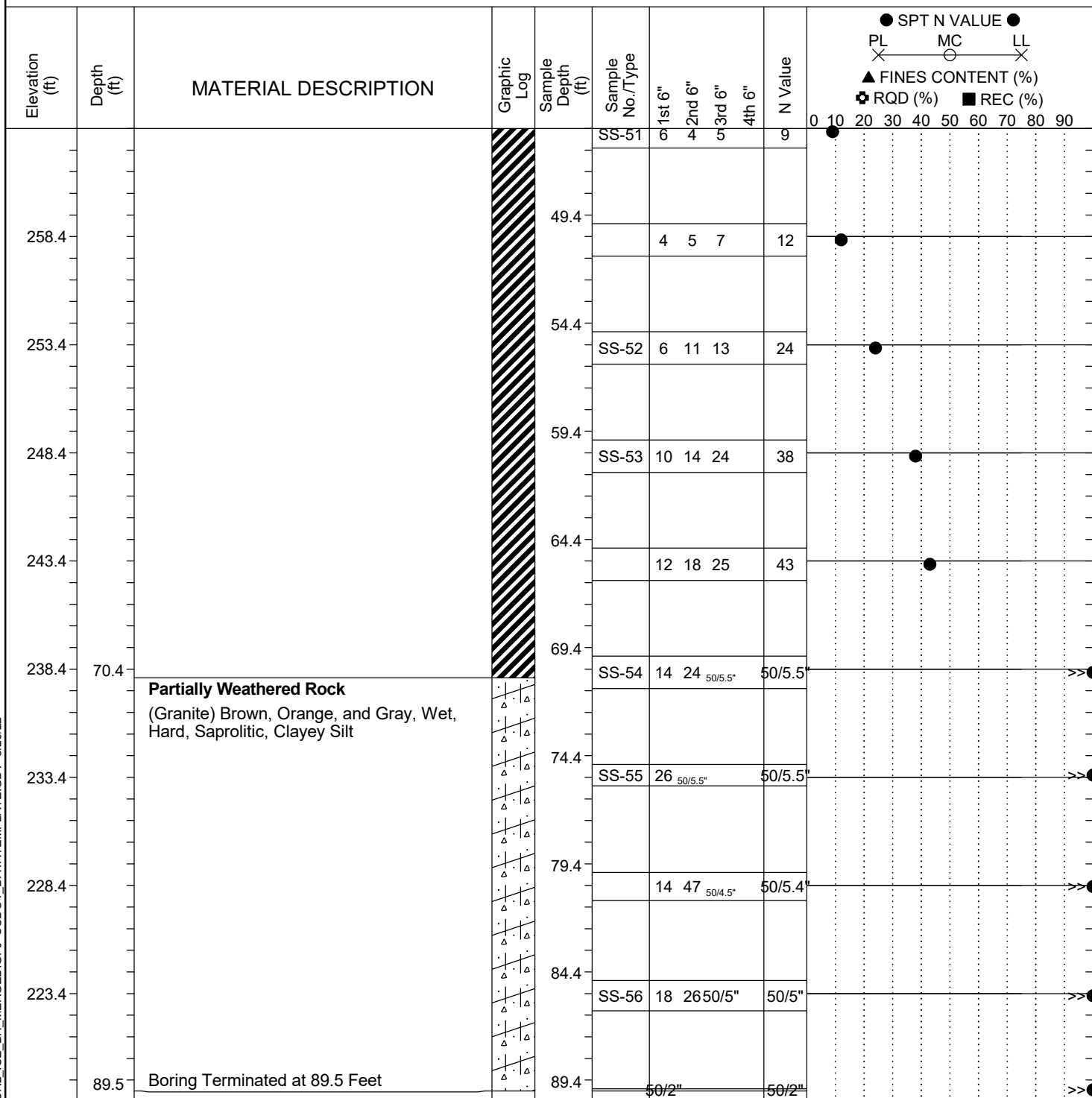
SAMPLER TYPE		DRILLING METHOD	
SS - Split Spoon	NQ - Rock Core, 1-7/8"	HSA - Hollow Stem Auger	RW - Rotary Wash
UD - Undisturbed Sample	CU - Cuttings	CFA - Continuous Flight Augers	RC - Rock Core
AWG - Rock Core, 1-1/8"	CT - Continuous Tube	DC - Driving Casing	



Continued Next Page

SAMPLER TYPE		DRILLING METHOD	
SS - Split Spoon	NQ - Rock Core, 1-7/8"	HSA - Hollow Stem Auger	RW - Rotary Wash
UD - Undisturbed Sample	CU - Cuttings	CFA - Continuous Flight Augers	RC - Rock Core
AWG - Rock Core, 1-1/8"	CT - Continuous Tube	DC - Driving Casing	

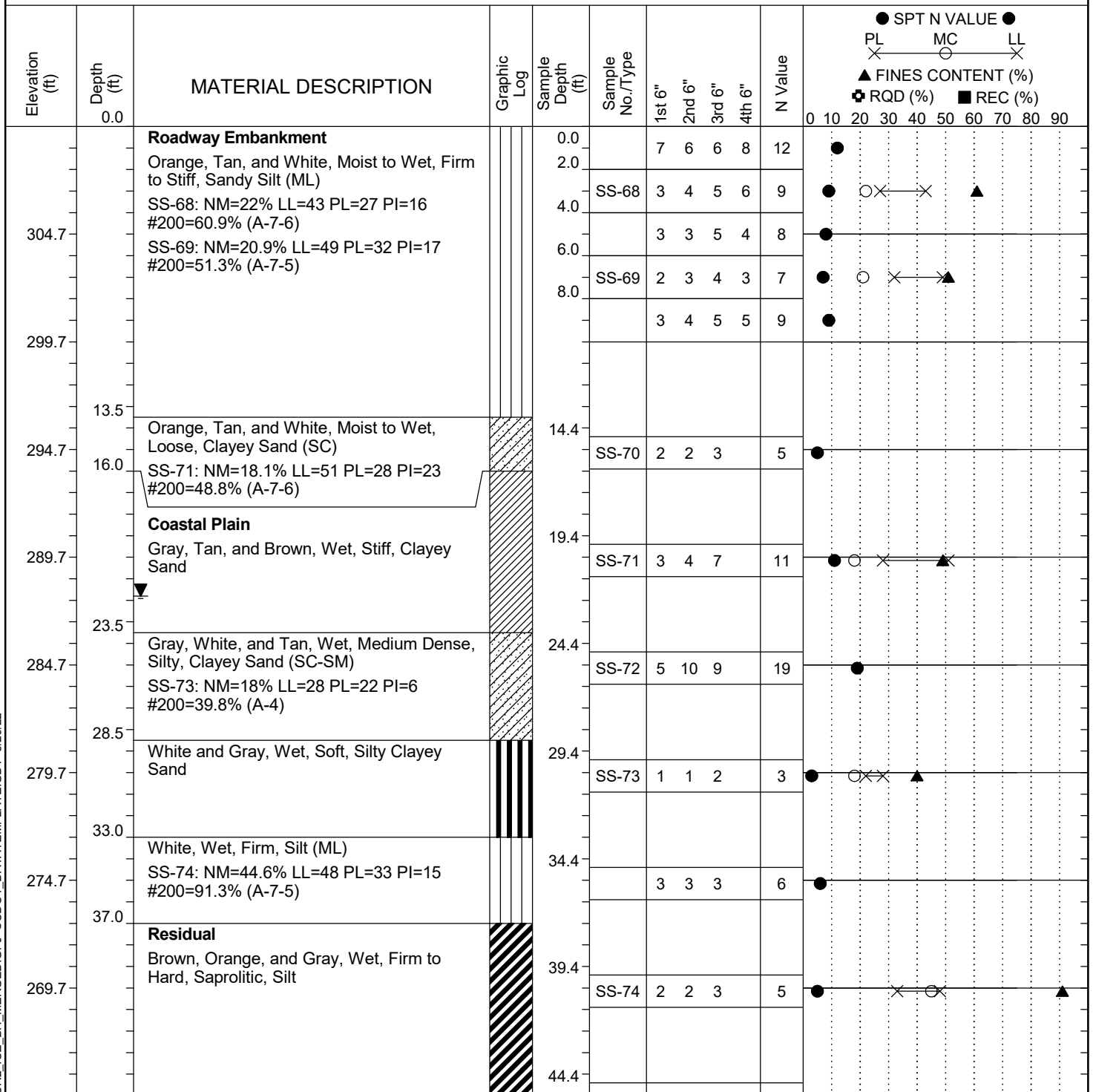
Project ID:	P039719	County:	Richland	Boring No.:	G-111
Site Description:	Carolina Crossroads Phase 2			Route:	Ramp
Eng./Geo.:	C. McIlroy	Boring Location:	396+58	Offset:	28 LT
Elev.:	308.4 ft	Latitude:	34.03937037	Longitude:	-81.09584966
Total Depth:	89.5 ft	Soil Depth:	89.5 ft	Date Started:	5/3/2022
Core Depth:	N/A ft	Date Completed:	5/3/2022		
Bore Hole Diameter (in):	2.25	Sampler Configuration		Liner Required:	Y (N)
Liner Used:	Y (N)				
Drill Machine:	D-50 #439	Drill Method:	RW	Hammer Type:	Automatic
Energy Ratio:	90.8%				
Core Size:	N/A	Driller:	R. Cassell	Groundwater:	TOB N/A
24HR	21.5 ft				



LEGEND

SAMPLER TYPE		DRILLING METHOD	
SS - Split Spoon	NQ - Rock Core, 1-7/8"	HSA - Hollow Stem Auger	RW - Rotary Wash
UD - Undisturbed Sample	CU - Cuttings	CFA - Continuous Flight Augers	RC - Rock Core
AWG - Rock Core, 1-1/8"	CT - Continuous Tube	DC - Driving Casing	

Project ID: P039719				County: Richland		Boring No.: G-112		
Site Description:		Carolina Crossroads Phase 2					Route:	Ramp
Eng./Geo.: C. McIlroy		Boring Location: 397+03			Offset:	24 LT	Alignment:	RAMPF
Elev.: 309.7 ft	Latitude:	34.039457	Longitude:		-81.09576062	Date Started:		5/4/2022
Total Depth:	70.3 ft	Soil Depth:	70.3 ft	Core Depth:	N/A ft	Date Completed:		5/4/2022
Bore Hole Diameter (in):		2.25	Sampler Configuration		Liner Required:	Y (N)	Liner Used:	Y (N)
Drill Machine:	D-50 #439	Drill Method:	RW	Hammer Type:		Automatic	Energy Ratio:	90.8%
Core Size:	N/A	Driller:	R. Cassell	Groundwater:	TOB	N/A	24HR	21.8 ft



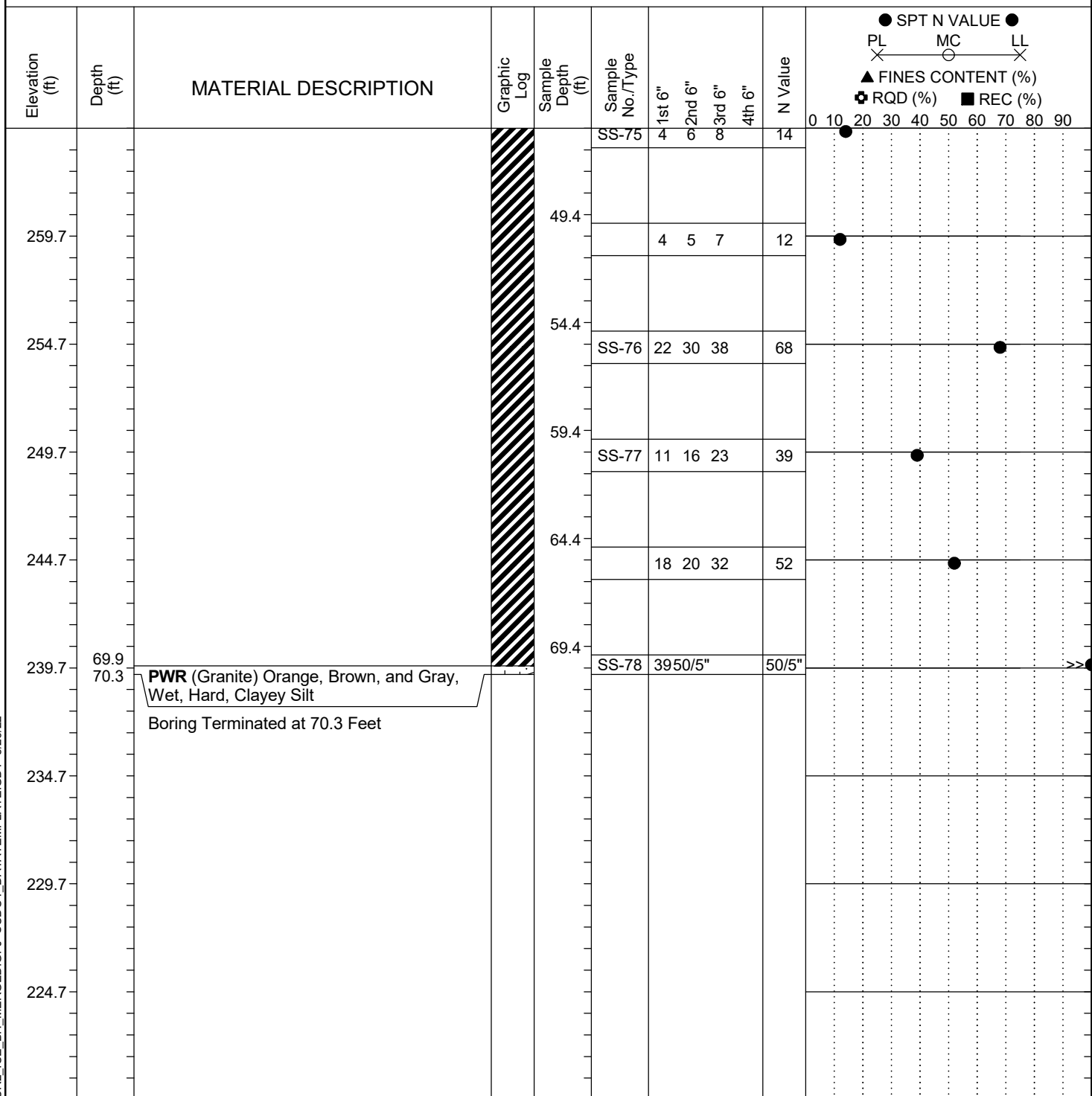
LEGEND

Continued Next Page

SC_DOT 20-01_CCR2_ICE_BH_MERGED.GPJ SCDOT_DATATEMPLATE.GDT 5/26/22

SAMPLER TYPE				DRILLING METHOD			
SS - Split Spoon	NQ - Rock Core, 1-7/8"	HSA - Hollow Stem Auger	RW - Rotary Wash	CFA - Continuous Flight Augers	RC - Rock Core	DC - Driving Casing	
UD - Undisturbed Sample	CU - Cuttings						
AWG - Rock Core, 1-1/8"	CT - Continuous Tube						

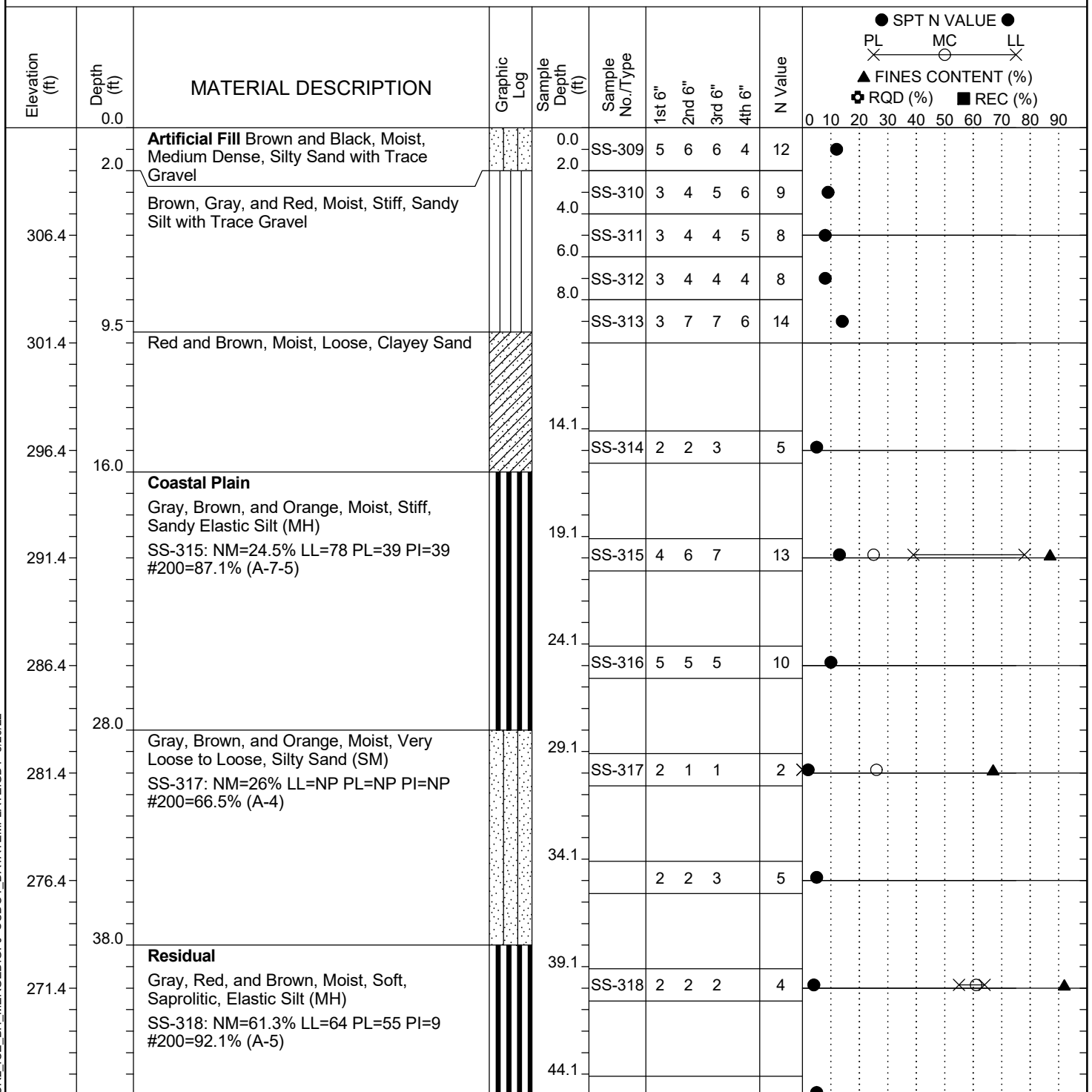
Project ID:	P039719	County:	Richland	Boring No.:	G-112
Site Description:	Carolina Crossroads Phase 2			Route:	Ramp
Eng./Geo.:	C. McIlroy	Boring Location:	397+03	Offset:	24 LT
Elev.:	309.7 ft	Latitude:	34.039457	Longitude:	-81.09576062
Total Depth:	70.3 ft	Soil Depth:	70.3 ft	Date Started:	5/4/2022
Core Depth:	N/A ft	Date Completed:	5/4/2022		
Bore Hole Diameter (in):	2.25	Sampler Configuration		Liner Required:	Y (N)
Drill Machine:	D-50 #439	Drill Method:	RW	Energy Ratio:	90.8%
Core Size:	N/A	Driller:	R. Cassell	Groundwater:	TOB N/A
				24HR	21.8 ft



LEGEND

SAMPLER TYPE		DRILLING METHOD	
SS - Split Spoon	NQ - Rock Core, 1-7/8"	HSA - Hollow Stem Auger	RW - Rotary Wash
UD - Undisturbed Sample	CU - Cuttings	CFA - Continuous Flight Augers	RC - Rock Core
AWG - Rock Core, 1-1/8"	CT - Continuous Tube	DC - Driving Casing	

Project ID:	P039719	County:	Richland	Boring No.:	G-113
Site Description:	Carolina Crossroads Phase 2			Route:	Ramp
Eng./Geo.:	M. Stanbury	Boring Location:	397+32	Offset:	31 RT
Elev.:	311.4 ft	Latitude:	34.03934678	Longitude:	-81.09556744
Total Depth:	84.9 ft	Soil Depth:	84.9 ft	Date Started:	3/9/2022
Core Depth:	N/A ft	Date Completed:	3/9/2022		
Bore Hole Diameter (in):	2.25	Sampler Configuration		Liner Required:	Y (N)
Drill Machine:	D-50 #439	Drill Method:	RW	Hammer Type:	Automatic
Core Size:	N/A	Driller:	R. Cassell	Energy Ratio:	90.8%
		Groundwater:	TOB	N/A	24HR
					Cave @ 99'



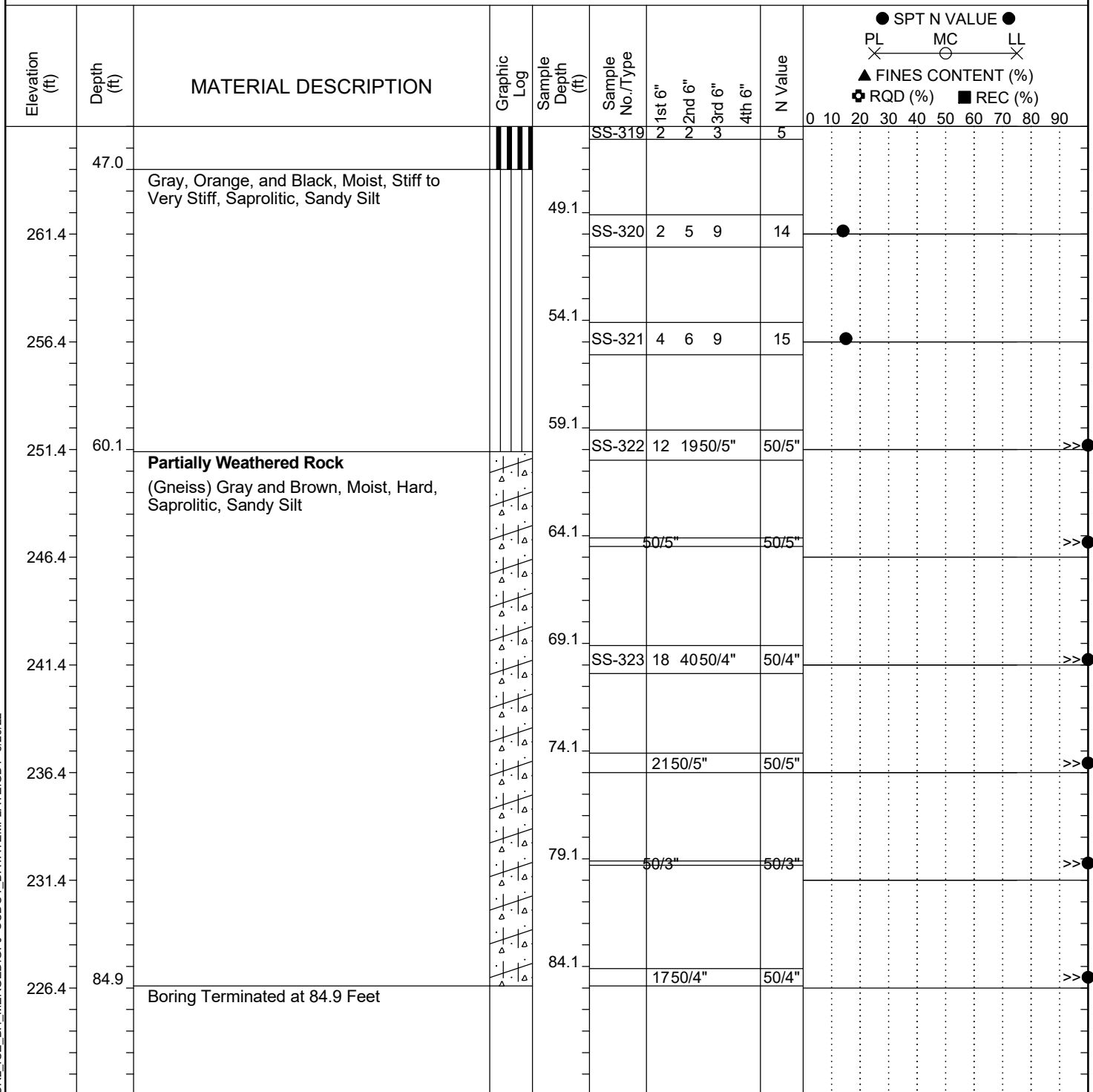
LEGEND

Continued Next Page

SC_DOT 20-01_CCR2_ICE_BH_MERGED.GPJ SCDOT_DATATEMPLATE.GDT 5/26/22

SAMPLER TYPE		DRILLING METHOD	
SS - Split Spoon	NQ - Rock Core, 1-7/8"	HSA - Hollow Stem Auger	RW - Rotary Wash
UD - Undisturbed Sample	CU - Cuttings	CFA - Continuous Flight Augers	RC - Rock Core
AWG - Rock Core, 1-1/8"	CT - Continuous Tube	DC - Driving Casing	

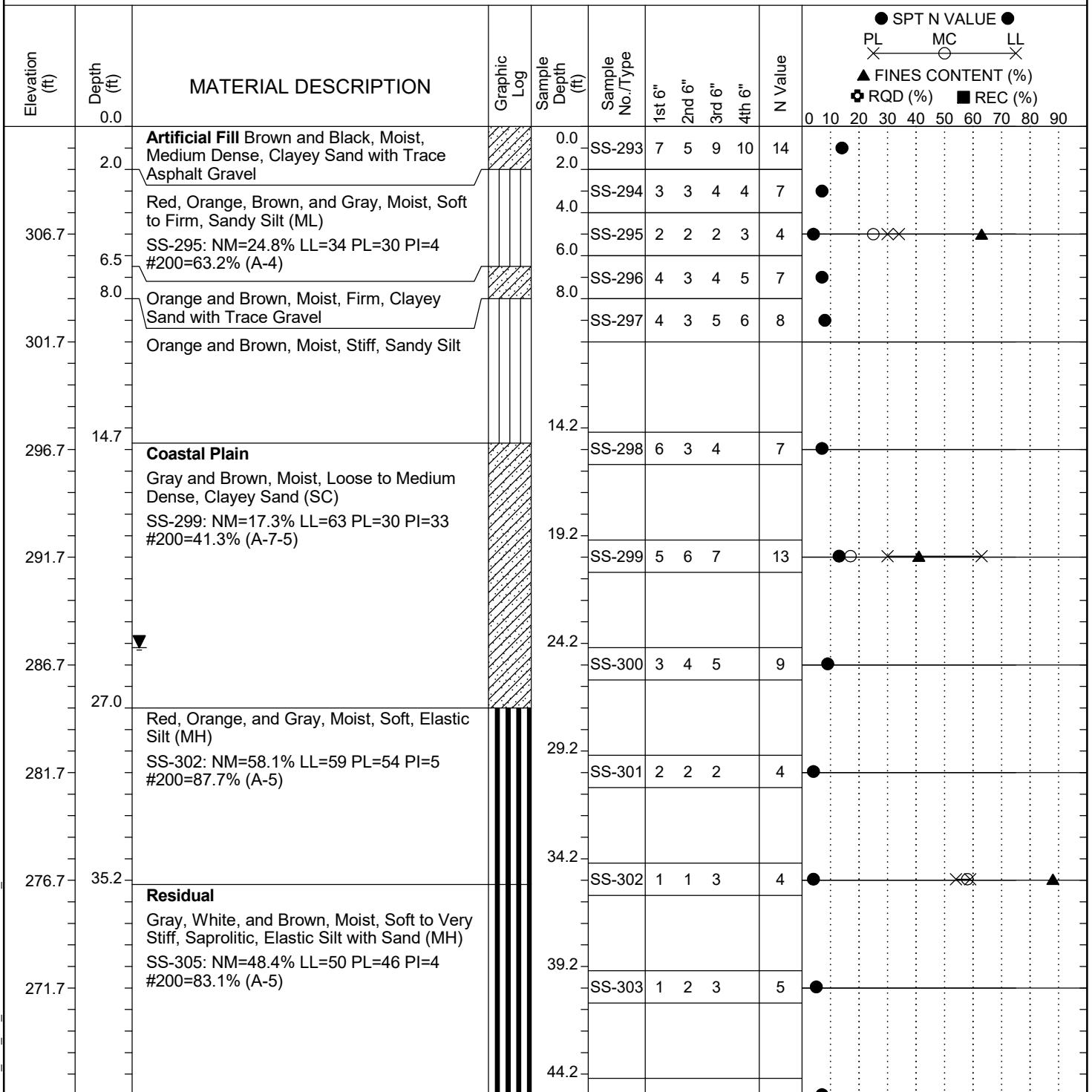
Project ID:	P039719	County:	Richland	Boring No.:	G-113
Site Description:	Carolina Crossroads Phase 2			Route:	Ramp
Eng./Geo.:	M. Stanbury	Boring Location:	397+32	Offset:	31 RT
Elev.:	311.4 ft	Latitude:	34.03934678	Longitude:	-81.09556744
Total Depth:	84.9 ft	Soil Depth:	84.9 ft	Date Started:	3/9/2022
Core Depth:	N/A ft	Date Completed:	3/9/2022		
Bore Hole Diameter (in):	2.25	Sampler Configuration		Liner Required:	Y (N)
Drill Machine:	D-50 #439	Drill Method:	RW	Hammer Type:	Automatic
Core Size:	N/A	Driller:	R. Cassell	Energy Ratio:	90.8%
		Groundwater:	TOB	N/A	24HR
					Cave @ 99'



LEGEND

SAMPLER TYPE		DRILLING METHOD	
SS - Split Spoon	NQ - Rock Core, 1-7/8"	HSA - Hollow Stem Auger	RW - Rotary Wash
UD - Undisturbed Sample	CU - Cuttings	CFA - Continuous Flight Augers	RC - Rock Core
AWG - Rock Core, 1-1/8"	CT - Continuous Tube	DC - Driving Casing	

Project ID:	P039719	County:	Richland	Boring No.:	G-114
Site Description:	Carolina Crossroads Phase 2			Route:	Ramp
Eng./Geo.:	M. Stanbury	Boring Location:	397+51	Offset:	34 RT
Elev.:	311.7 ft	Latitude:	34.0394073	Longitude:	-81.09551299
Total Depth:	70 ft	Soil Depth:	70 ft	Core Depth:	N/A ft
Date Started:	3/8/2022			Date Completed:	3/8/2022
Bore Hole Diameter (in):	2.25	Sampler Configuration		Liner Required:	Y (N)
Liner Used:	Y (N)	Drill Machine:	D-50 #439	Drill Method:	RW
Hammer Type:	Automatic	Energy Ratio:	90.8%	Core Size:	N/A
Driller:	R. Cassell	Groundwater:	TOB	N/A	24HR
24.2 ft					



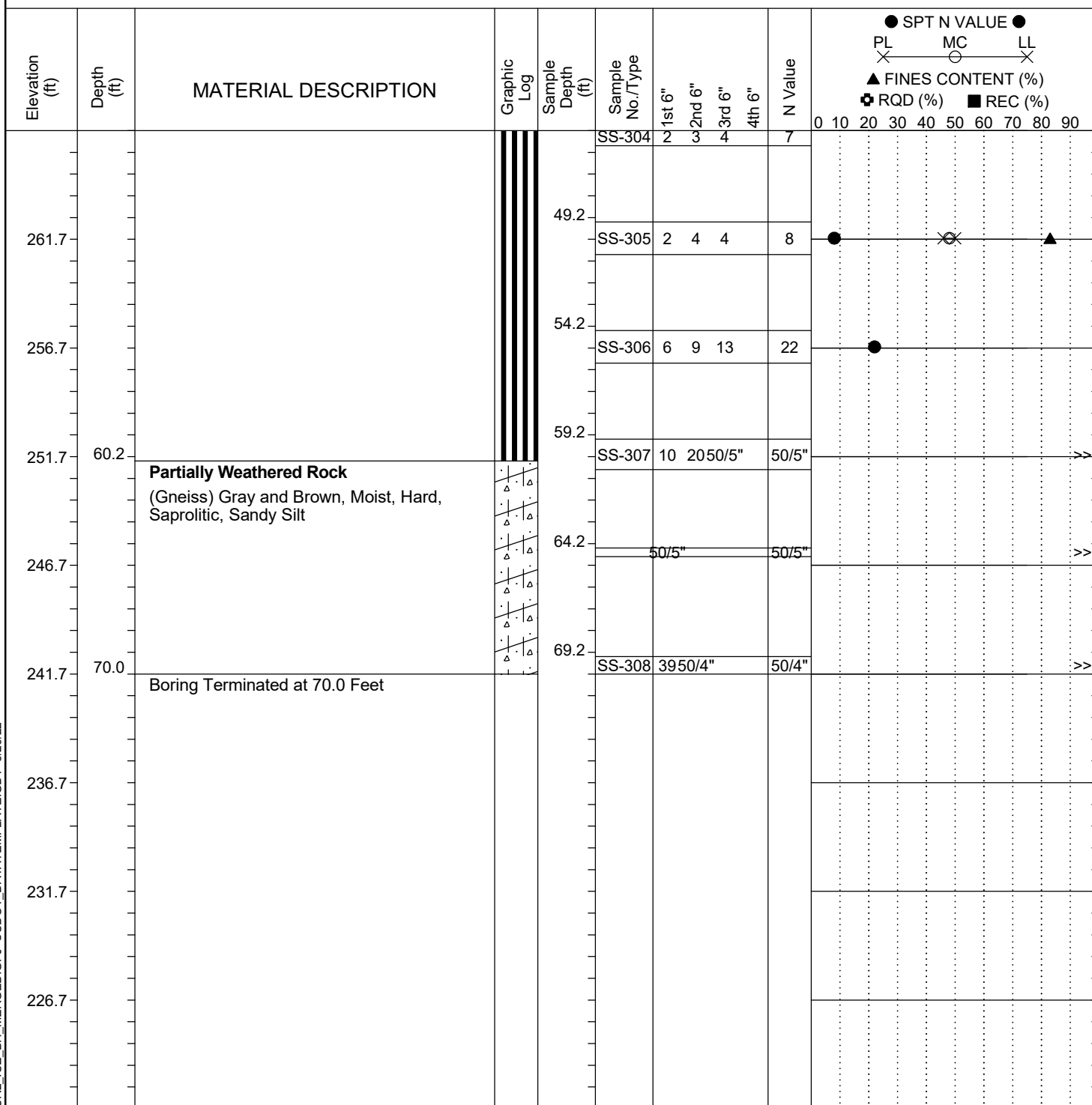
LEGEND

Continued Next Page

SC_DOT 20-01_CCR2_ICE_BH_MERGED.GPJ SCDOT_DATATEMPLATE.GDT 5/26/22

SAMPLER TYPE		DRILLING METHOD	
SS - Split Spoon	NQ - Rock Core, 1-7/8"	HSA - Hollow Stem Auger	RW - Rotary Wash
UD - Undisturbed Sample	CU - Cuttings	CFA - Continuous Flight Augers	RC - Rock Core
AWG - Rock Core, 1-1/8"	CT - Continuous Tube	DC - Driving Casing	

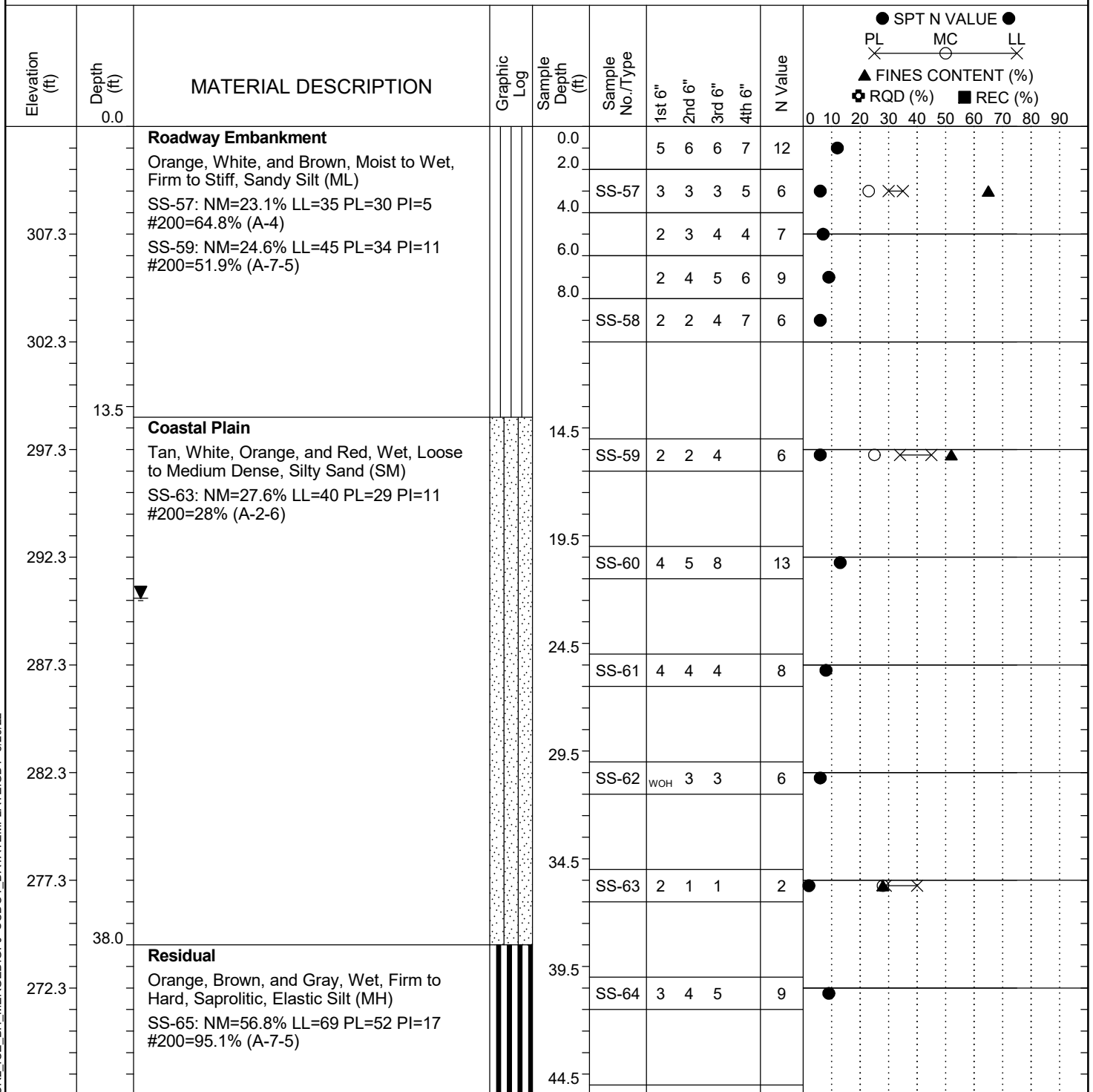
Project ID:	P039719	County:	Richland	Boring No.:	G-114
Site Description:	Carolina Crossroads Phase 2			Route:	Ramp
Eng./Geo.:	M. Stanbury	Boring Location:	397+51	Offset:	34 RT
Elev.:	311.7 ft	Latitude:	34.0394073	Longitude:	-81.09551299
Total Depth:	70 ft	Soil Depth:	70 ft	Core Depth:	N/A ft
Date Started:	3/8/2022				
Date Completed:	3/8/2022				
Bore Hole Diameter (in):	2.25	Sampler Configuration	Liner Required: Y (N)		Liner Used: Y (N)
Drill Machine:	D-50 #439	Drill Method:	RW	Hammer Type:	Automatic
Energy Ratio:	90.8%				
Core Size:	N/A	Driller:	R. Cassell	Groundwater:	TOB N/A
24HR	24.2 ft				



LEGEND

SAMPLER TYPE		DRILLING METHOD	
SS - Split Spoon	NQ - Rock Core, 1-7/8"	HSA - Hollow Stem Auger	RW - Rotary Wash
UD - Undisturbed Sample	CU - Cuttings	CFA - Continuous Flight Augers	RC - Rock Core
AWG - Rock Core, 1-1/8"	CT - Continuous Tube	DC - Driving Casing	

Project ID: P039719				County: Richland		Boring No.: G-115		
Site Description:		Carolina Crossroads Phase 2					Route: Ramp	
Eng./Geo.: C. McIlroy		Boring Location: 398+00			Offset: 23 LT		Alignment: RAMPF	
Elev.: 312.3 ft		Latitude: 34.03960702		Longitude: -81.09548966		Date Started: 5/4/2022		
Total Depth: 70.8 ft		Soil Depth: 70.8 ft		Core Depth: N/A ft		Date Completed: 5/4/2022		
Bore Hole Diameter (in): 2.25		Sampler Configuration			Liner Required: Y (N)		Liner Used: Y (N)	
Drill Machine: D-50 #439		Drill Method: RW		Hammer Type: Automatic		Energy Ratio: 90.8%		
Core Size: N/A		Driller: R. Cassell		Groundwater: TOB N/A		24HR: 21.9 ft		

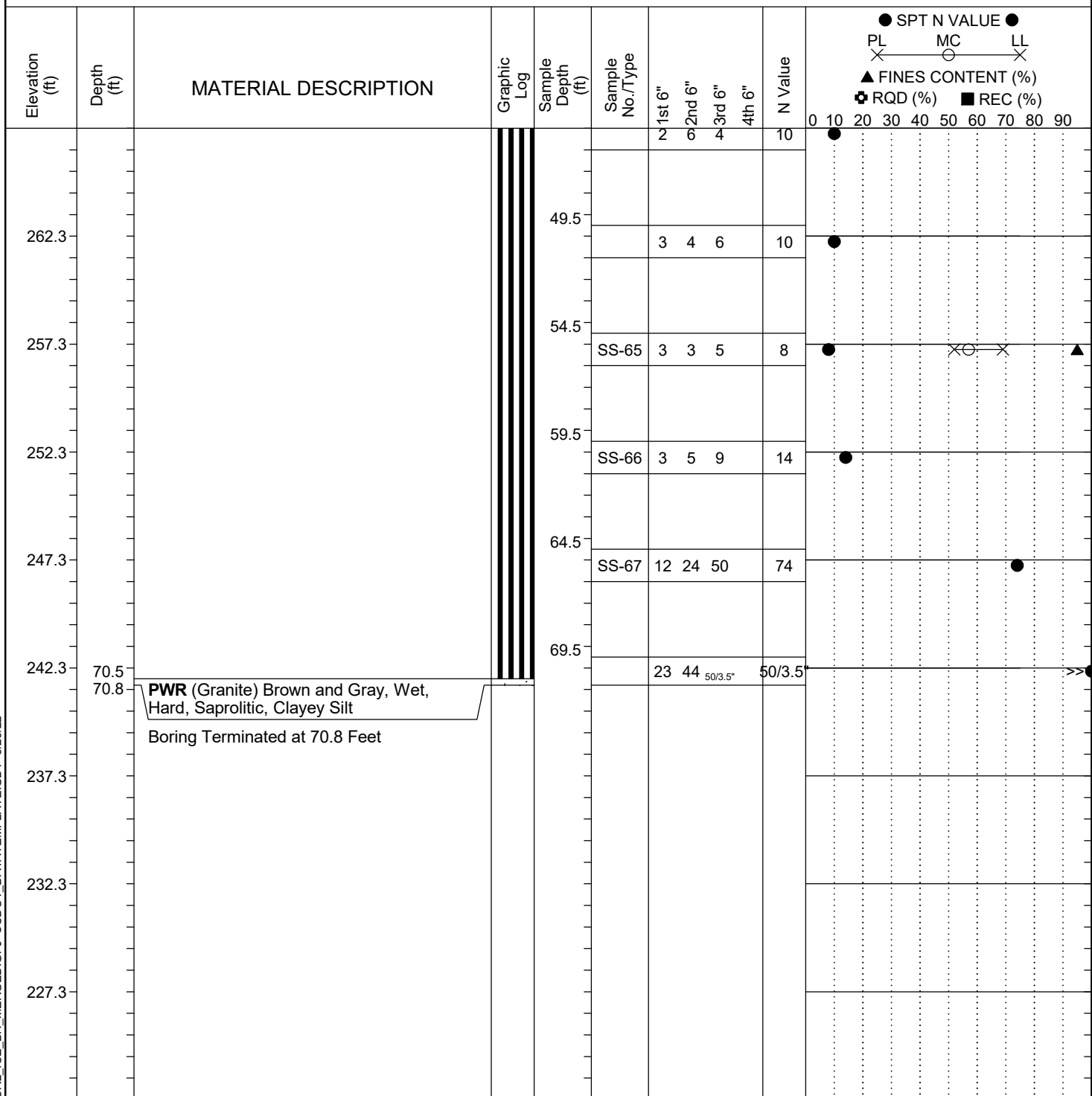


LEGEND

Continued Next Page

SAMPLER TYPE			DRILLING METHOD	
SS - Split Spoon	NQ - Rock Core, 1-7/8"		HSA - Hollow Stem Auger	RW - Rotary Wash
UD - Undisturbed Sample	CU - Cuttings		CFA - Continuous Flight Augers	RC - Rock Core
AWG - Rock Core, 1-1/8"	CT - Continuous Tube		DC - Driving Casing	

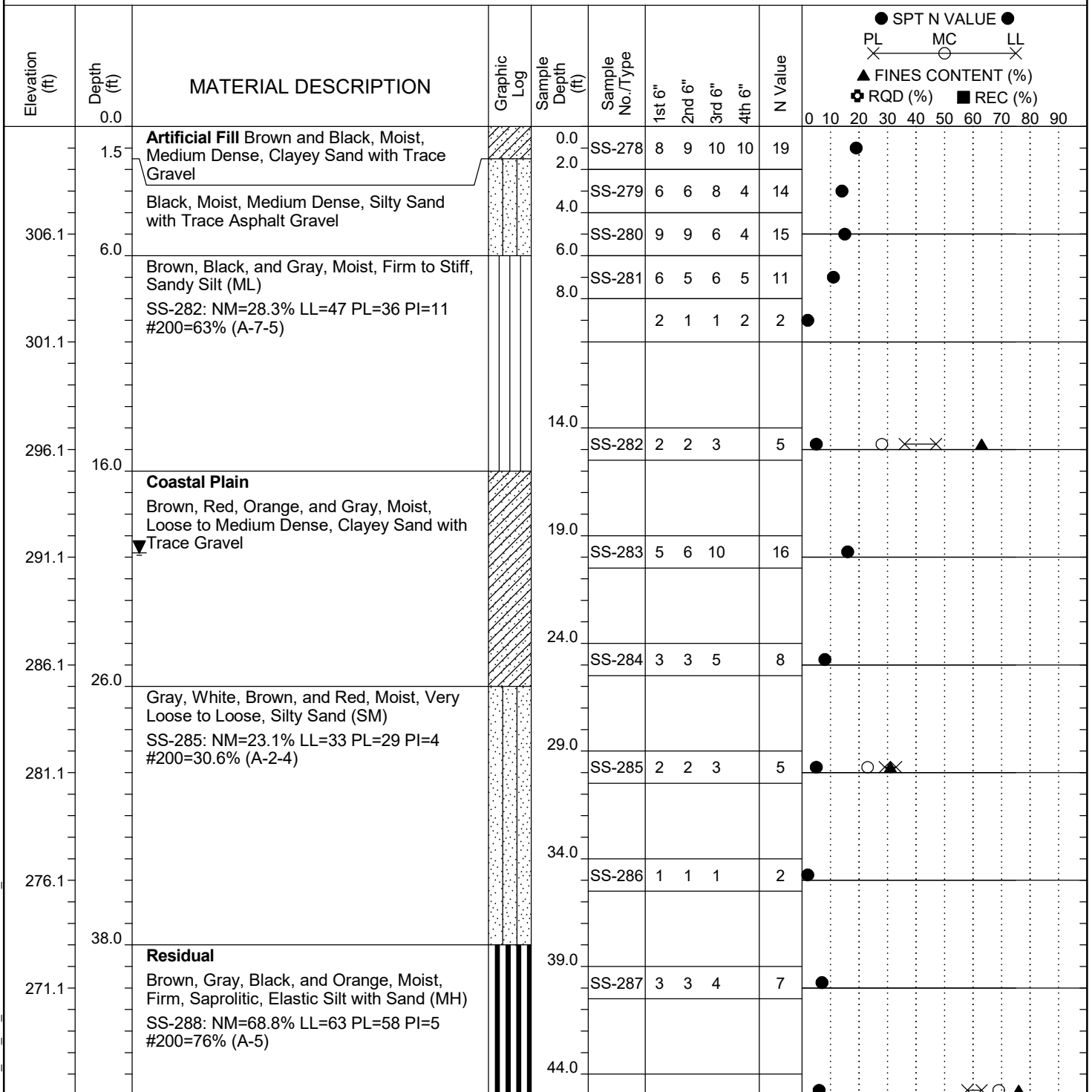
Project ID:	P039719	County:	Richland	Boring No.:	G-115
Site Description:	Carolina Crossroads Phase 2			Route:	Ramp
Eng./Geo.:	C. McIlroy	Boring Location:	398+00	Offset:	23 LT
Elev.:	312.3 ft	Latitude:	34.03960702	Longitude:	-81.09548966
Total Depth:	70.8 ft	Soil Depth:	70.8 ft	Date Started:	5/4/2022
Core Depth:	N/A ft	Date Completed:	5/4/2022		
Bore Hole Diameter (in):	2.25	Sampler Configuration		Liner Required:	Y (N)
Drill Machine:	D-50 #439	Drill Method:	RW	Hammer Type:	Automatic
Core Size:	N/A	Driller:	R. Cassell	Energy Ratio:	90.8%
		Groundwater:	TOB	24HR	21.9 ft



LEGEND

SAMPLER TYPE		DRILLING METHOD	
SS - Split Spoon	NQ - Rock Core, 1-7/8"	HSA - Hollow Stem Auger	RW - Rotary Wash
UD - Undisturbed Sample	CU - Cuttings	CFA - Continuous Flight Augers	RC - Rock Core
AWG - Rock Core, 1-1/8"	CT - Continuous Tube	DC - Driving Casing	

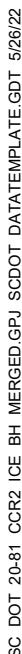
Project ID:	P039719	County:	Richland	Boring No.:	G-116
Site Description:	Carolina Crossroads Phase 2			Route:	Ramp
Eng./Geo.:	M. Stanbury	Boring Location:	397+95	Offset:	60 RT
Elev.:	311.1 ft	Latitude:	34.03937795	Longitude:	-81.09530646
Total Depth:	70.4 ft	Soil Depth:	70.4 ft	Date Started:	3/8/2022
Core Depth:	N/A ft	Date Completed:	3/8/2022		
Bore Hole Diameter (in):	2.25	Sampler Configuration		Liner Required:	Y (N)
Drill Machine:	D-50 #439	Drill Method:	RW	Hammer Type:	Automatic
Core Size:	N/A	Driller:	R. Cassell	Energy Ratio:	90.8%
		Groundwater:	TOB	24HR	19.8 ft



LEGEND

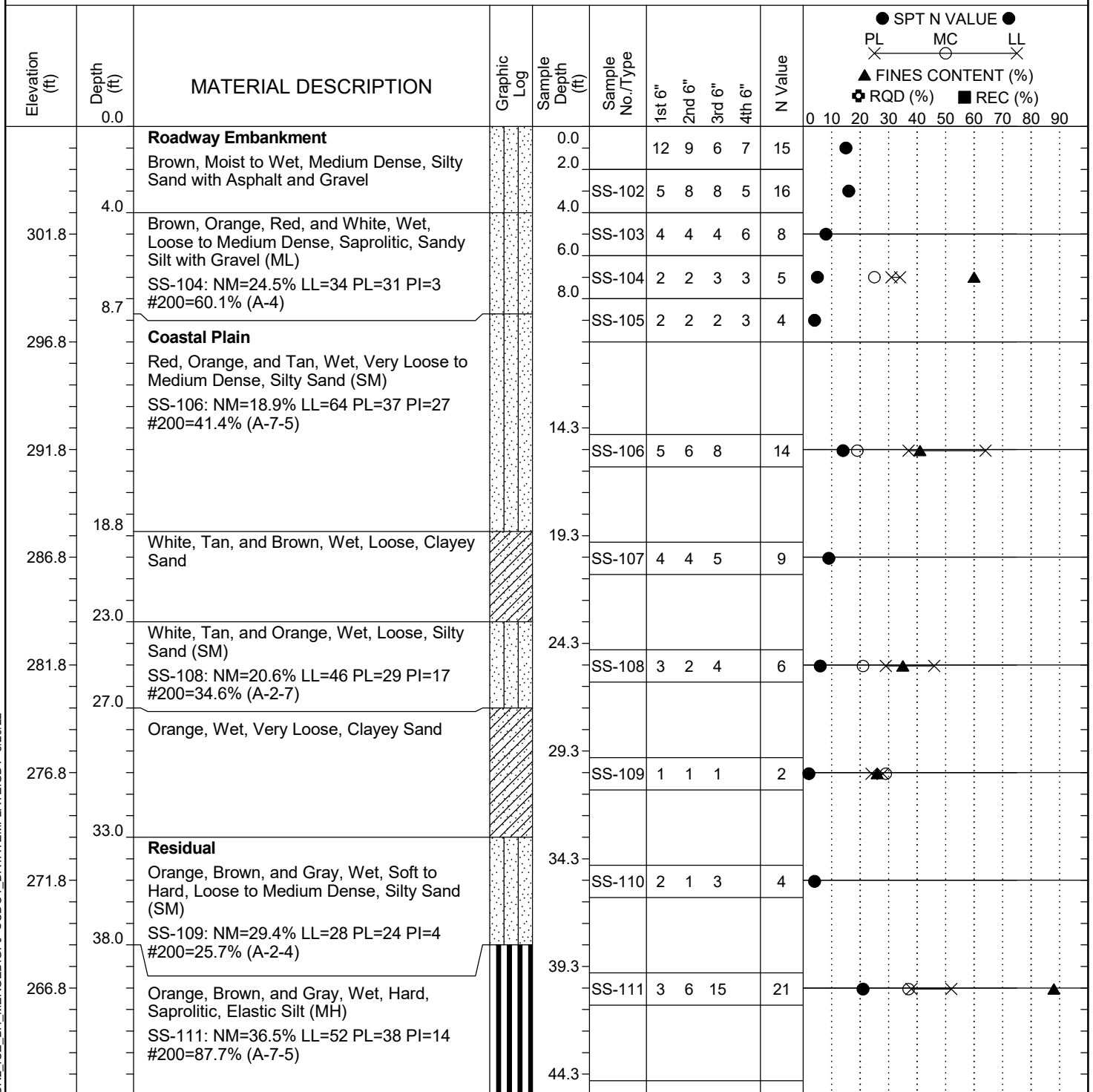
Continued Next Page

SAMPLER TYPE		DRILLING METHOD	
SS - Split Spoon	NQ - Rock Core, 1-7/8"	HSA - Hollow Stem Auger	RW - Rotary Wash
UD - Undisturbed Sample	CU - Cuttings	CFA - Continuous Flight Augers	RC - Rock Core
AWG - Rock Core, 1-1/8"	CT - Continuous Tube	DC - Driving Casing	



SAMPLER TYPE		DRILLING METHOD	
SS - Split Spoon	NQ - Rock Core, 1-7/8"	HSA - Hollow Stem Auger	RW - Rotary Wash
UD - Undisturbed Sample	CU - Cuttings	CFA - Continuous Flight Augers	RC - Rock Core
AWG - Rock Core, 1-1/8"	CT - Continuous Tube	DC - Driving Casing	

Project ID:	P039719	County:	Richland	Boring No.:	G-117
Site Description:	Carolina Crossroads Phase 2			Route:	Ramp
Eng./Geo.:	C. McIlroy	Boring Location:	395+25	Offset:	20 RT
Elev.:	306.8 ft	Latitude:	34.03905087	Longitude:	-81.09612992
Total Depth:	70.1 ft	Soil Depth:	70.1 ft	Date Started:	3/10/2022
Core Depth:	N/A ft	Date Completed:	3/10/2022	Alignment:	RAMPF
Bore Hole Diameter (in):	2.25	Sampler Configuration		Liner Required:	Y (N)
Drill Machine:	D-50 #435	Drill Method:	RW	Liner Used:	Y (N)
Core Size:	N/A	Hammer Type:	Automatic	Energy Ratio:	84.4%
Driller:	M. Morgan	Groundwater:	TOB	24HR	Cave @ 7'

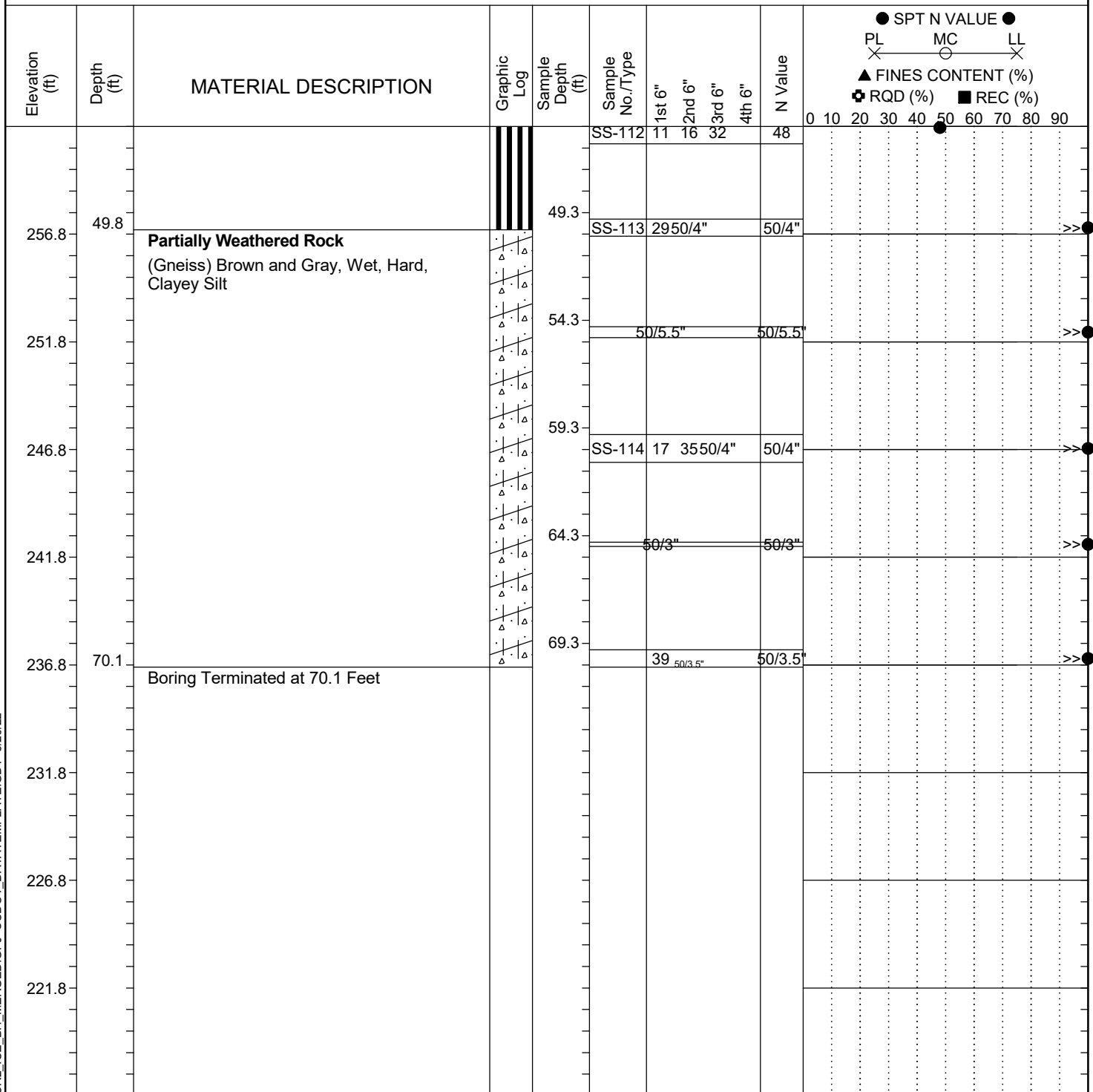


LEGEND

Continued Next Page

SAMPLER TYPE		DRILLING METHOD	
SS - Split Spoon	NQ - Rock Core, 1-7/8"	HSA - Hollow Stem Auger	RW - Rotary Wash
UD - Undisturbed Sample	CU - Cuttings	CFA - Continuous Flight Augers	RC - Rock Core
AWG - Rock Core, 1-1/8"	CT - Continuous Tube	DC - Driving Casing	

Project ID:	P039719	County:	Richland	Boring No.:	G-117
Site Description:	Carolina Crossroads Phase 2			Route:	Ramp
Eng./Geo.:	C. McIlroy	Boring Location:	395+25	Offset:	20 RT
Elev.:	306.8 ft	Latitude:	34.03905087	Longitude:	-81.09612992
Date Started:	3/10/2022				
Total Depth:	70.1 ft	Soil Depth:	70.1 ft	Core Depth:	N/A ft
Date Completed:	3/10/2022				
Bore Hole Diameter (in):	2.25	Sampler Configuration		Liner Required:	Y (N)
Liner Used:	Y (N)				
Drill Machine:	D-50 #435	Drill Method:	RW	Hammer Type:	Automatic
Energy Ratio:	84.4%				
Core Size:	N/A	Driller:	M. Morgan	Groundwater:	TOB N/A
24HR	Cave @ 7'				



LEGEND

SAMPLER TYPE		DRILLING METHOD	
SS - Split Spoon	NQ - Rock Core, 1-7/8"	HSA - Hollow Stem Auger	RW - Rotary Wash
UD - Undisturbed Sample	CU - Cuttings	CFA - Continuous Flight Augers	RC - Rock Core
AWG - Rock Core, 1-1/8"	CT - Continuous Tube	DC - Driving Casing	